

www.happyhomegroup.co.in



The Residence of Prestige



A nebula erupts... a cloud goes up in smoke... shrinking itself in smaller clouds... energy is released and the core becomes hotter... a star is born... a constellation is revealed...

Every star in the sky forms a part of a constellation which was usually used to tell time for hundreds of years. The 12 zodiacal constellations are used to symbolize the 12 months in a yearly cycle. Constellations are also known to direct the right path and the right direction with their distinct styles.





Happy Excelencia stands for a constellation of realized aspirations... It celebrates a gathering of prestigious stars which distinguish themselves from the rest of the horizon!

The entire project commemorates our drive to excel and shine on the pedestal of the world. We help bring each of the esteemed stalwarts to form a truly stellar constellation right here at Excelencia! It is all part of "joining the dots" of destiny collectively and effectively!

Happy Excelencia is thus structurally and literally... like the nucleus of reputation and prestige!



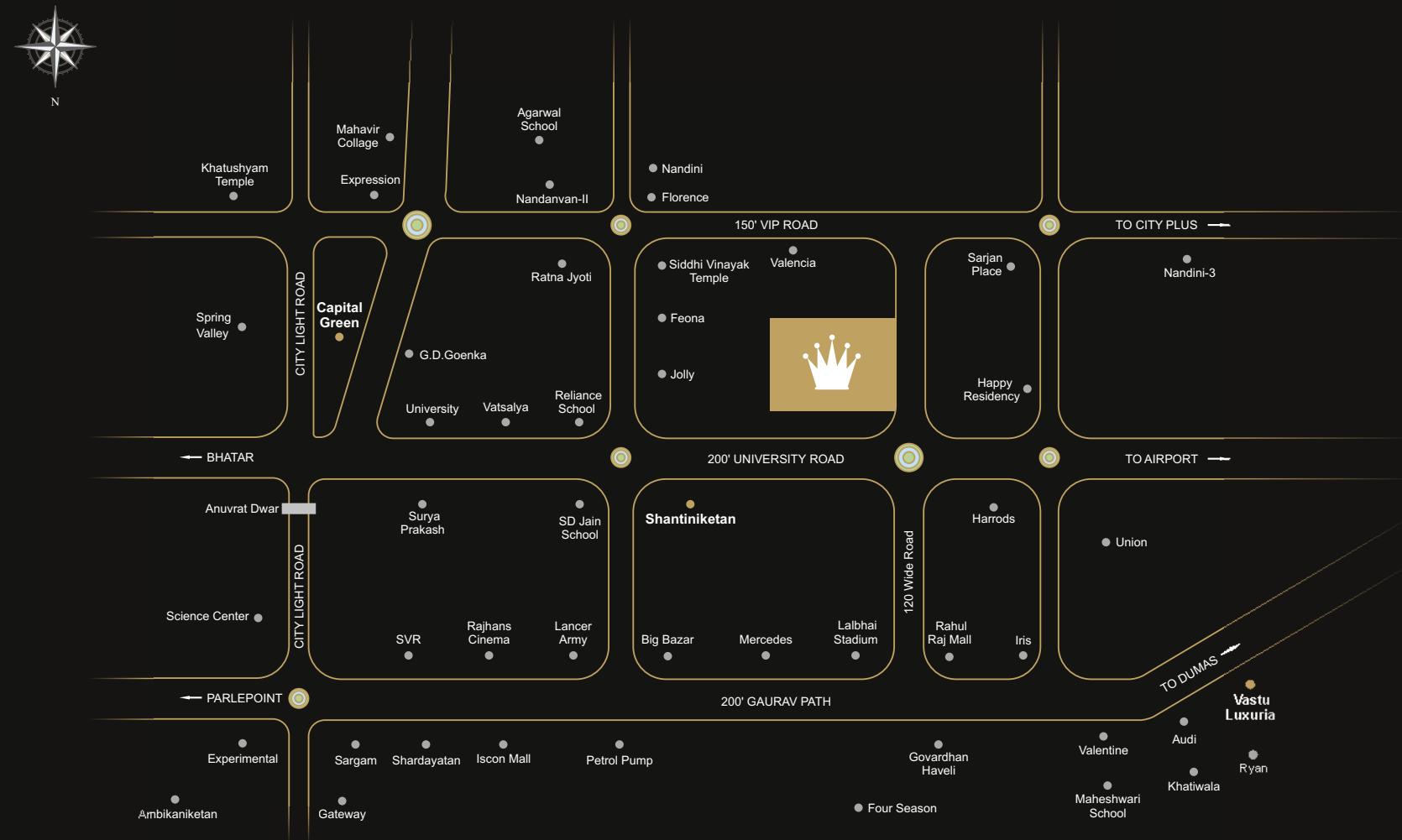
Happy Home Group believes in 'Originality' which they have proved through their unmatched projects again and again. By being original we mean, they translate and rationalize their creative thoughts to reality. Every project of Happy Home Group bears a different thought process and more focused idea of creating a robust infrastructure that contains radical design and sensible amenities.

Happy Home Group is one of the most sought after address and the closest to getting your dream home in a short time. They don't just create structures but build lasting relationships.



As starry constellations rule
the skies in the dark,
Happy Excelencia with its
ambience and structure,
rules the night

Location Map (Not to Scale)



11-storied buildings in 35000+ sq. yards area

5 and 6 BHK Uber Luxurious Abode

Vastu - Compliant Structures

2 Flats on each floor with multiple amenities

Mini bazaar for regular shopping needs

One-touch control for curtains and lights system in Reception & Clubhouse

Electric Car Service for Pedestrians

One and half lakh sq. ft. landscaping and utility area with recycled water

Aroma Garden and Acupressure Garden

Key Card Security Access with Single Entry-Exit



Enthralling Entrance



The Bird Eye's View
The heavens notice the splendor in green and sheen



Campus Layout Legend

- | | | | |
|---------------------------------|---------------------------|-------------------------|----------------------------------|
| 01) Entrance Gate | 10) Senior Citizen Garden | 19) Cycling Track | 28) Rock Climbing |
| 02) Security Cabin | 11) Lawn | 20) Basketball Court | 29) Life Size Piano |
| 03) Children School Van Waiting | 12) Skating Rink | 21) Volleyball Court | 30) Children Play Area |
| 04) Water Body | 13) Acupressure Garden | 22) Hindu Temple | 31) Ramp For Cellar |
| 05) Aroma Garden | 14) Net Cricket Pitch | 23) Life Size Chess | 32) Parking |
| 06) Department Store | 15) Mini-Golf | 24) Human Scale ludo | 33) Kinder Garden |
| 07) Garden View Seating | 16) Lawn Tennis Court | 25) Amphitheater | 34) Swimming Pool (Kids & Adult) |
| 08) Jogging Track | 17) Pavilion / Gazebo | 26) Dais | |
| 09) Jain Derasar + Upashray | 18) Musical Fountain | 27) Kids adventure Area | |



Contentment on the countenance...



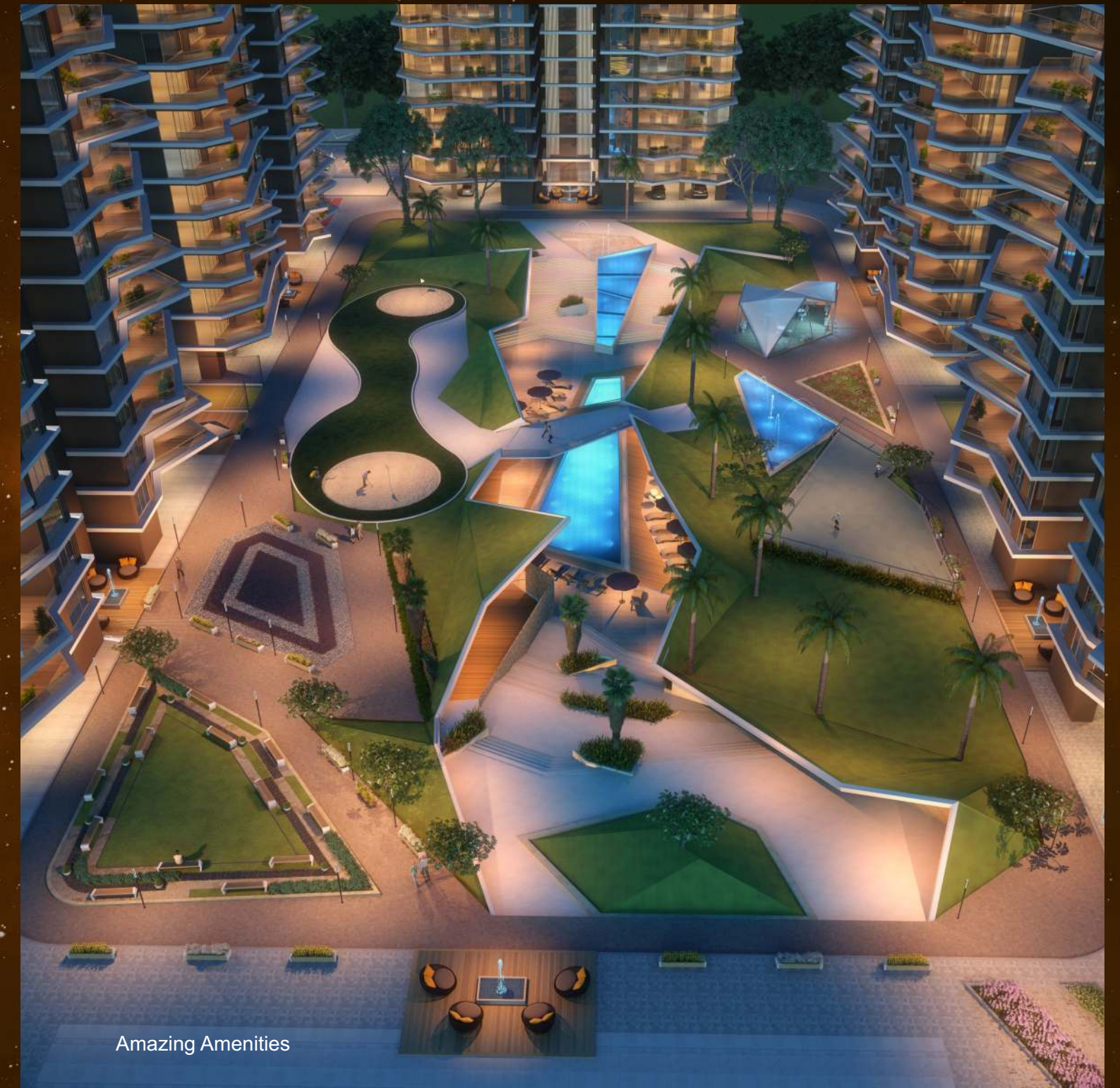
Club House

Legend

- | | | | |
|----------------------|----------------------------|---------------------|-------------------------|
| 01) Entry | 09) Hunger Zone | 17) Badminton Court | 25) Motion Game (X-box) |
| 02) Kitchen | 10) Massage & Spa | 18) Squash Court | 26) Bowling Alley |
| 03) Store Room | 11) Beauty Salon | 19) 3D Theater | 27) Dart Room |
| 04) Banquet Hall | 12) Locker Room | 20) Music Library | 28) Indoor Game |
| 05) Performance Dais | 13) Reception | 21) Reading Library | 29) Swimming Pool |
| 06) Dressing Room | 14) Gym Instructor's Cabin | 22) Creche | 30) Kid's Pool |
| 07) Dance Floor | 15) Gym | 23) Kid's Nursery | |
| 08) Conference Room | 16) Water Body | 24) Play Station | |

Amenities

Happy Excelencia delivers what is expected with excellence and much more...



Amazing Amenities

With one lakh sq feet landscape area and a water body, Excelencia is eco-friendly to the core. Lush green lawns, senior citizen gardens and solar street lights underline the importance we have attached to environment.



RELAXATION

Everything you do can be done better from a place of relaxation

Relive your internal spark with our musical fountain, gazebos, temples, jogging and cycling tracks and much more. Relax your mind to relax your body and vice-versa.



Swimming Pool | Kids Pool | Hindu Temple | Jain Temple & Upashray | Gazebos | Musical Fountain | Paved Walk Way
Jogging Track | Cycling Track | 1 Lac sq.ft. Landscape Area | Water Body | Lawn | Senior Citizen Garden
Kinder Garden | Library | Sun Deck | Green Education For Staff & Residents | Waiting Lounge for Visitors Driver



Boost your aqua spirit of adventure
with body and soul together



Splash with kids around!

The Bathing Ecstasy

The neatly etched gardens are like the fantasy of artists and poets galore



The Organized Library

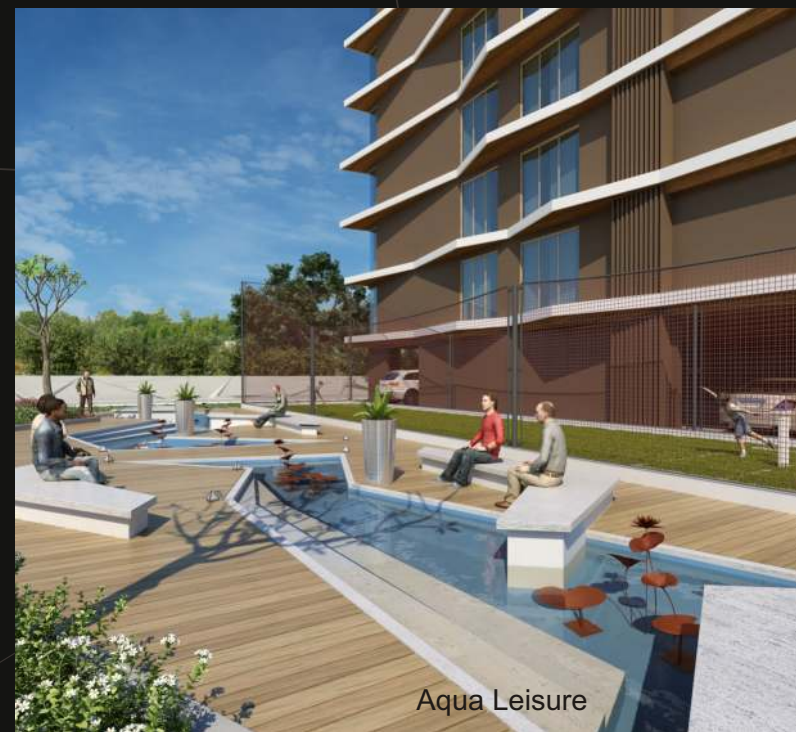


The Blissful Aromatic Garden

Sobriety and calmness rule in nature's lap here



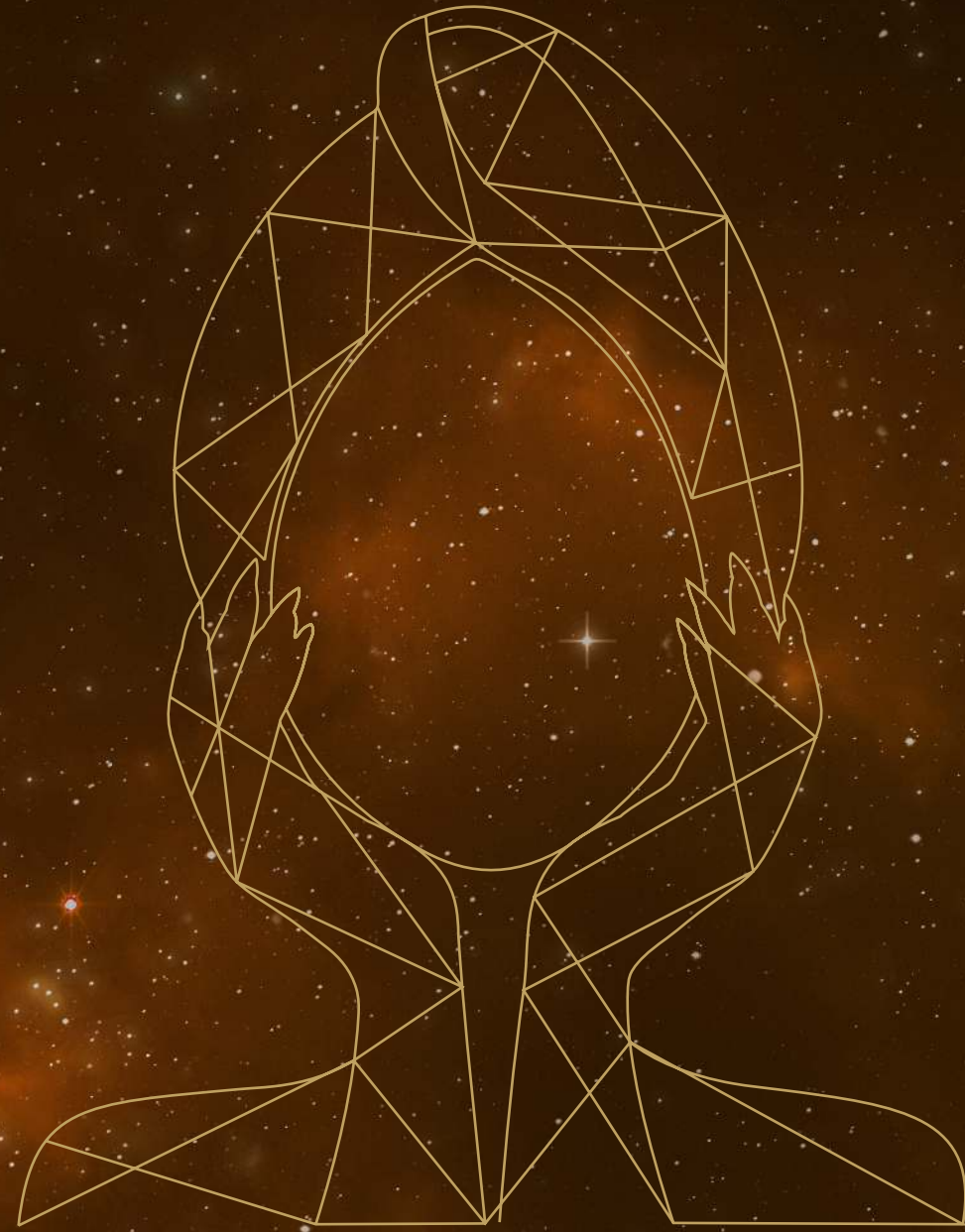
The Swirly Fountain



Aqua Leisure



The Veteran Leisure Place



REJUVENATION

Sometimes the most important thing in the whole day is the rest we take between two deep breaths

Pamper your senses with a beauty salon, jacuzzi and the sauna while you can even recharge your batteries with the gymnasium, the acupressure garden and the aroma garden.



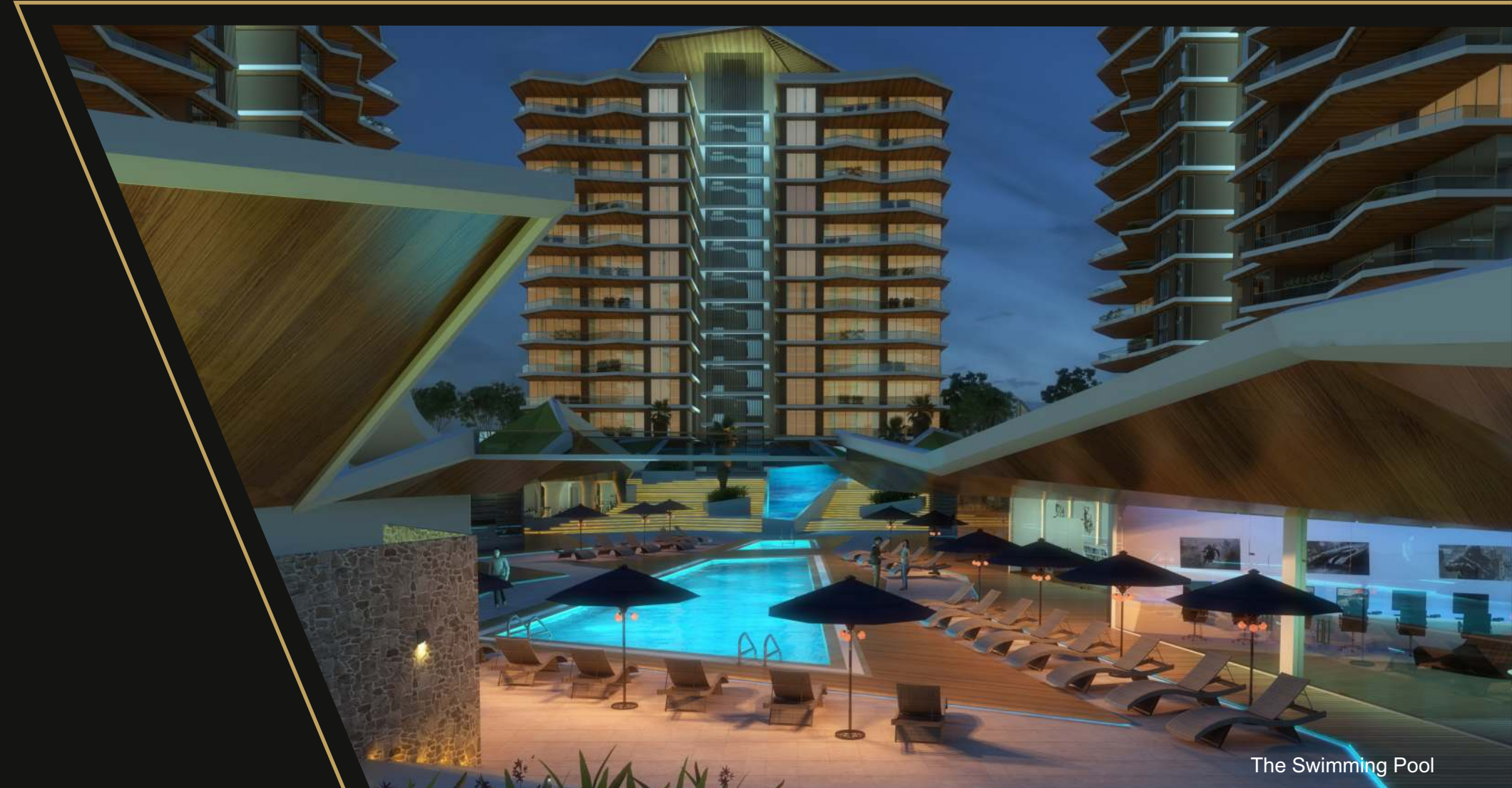
Beauty Salon | Spa & Sauna | Steam bath | Jacuzzi | Aroma Garden
Gymnasium | Acupressure Garden



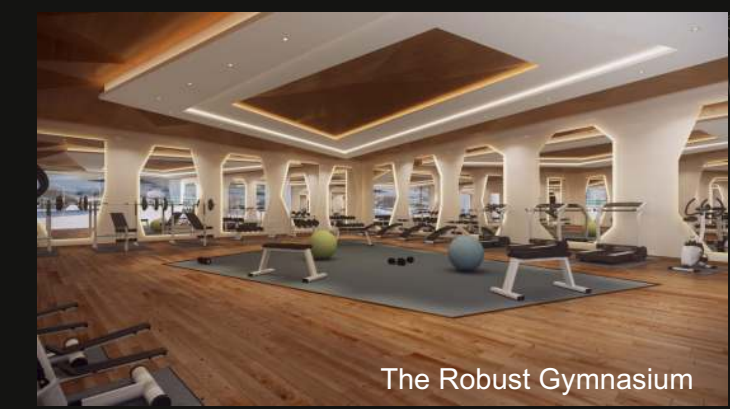


The Refreshing Spa

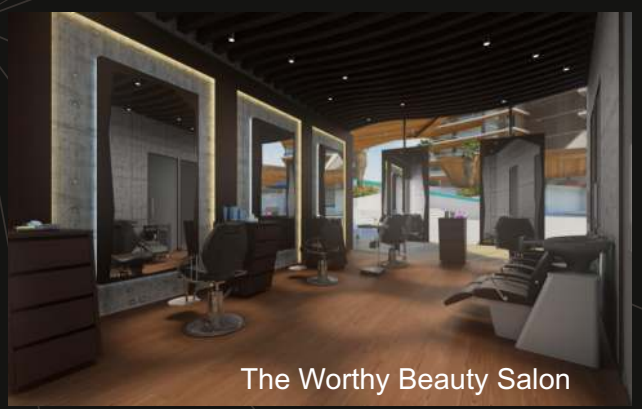
Peace and comfort drive relaxation and ecstasy by all means



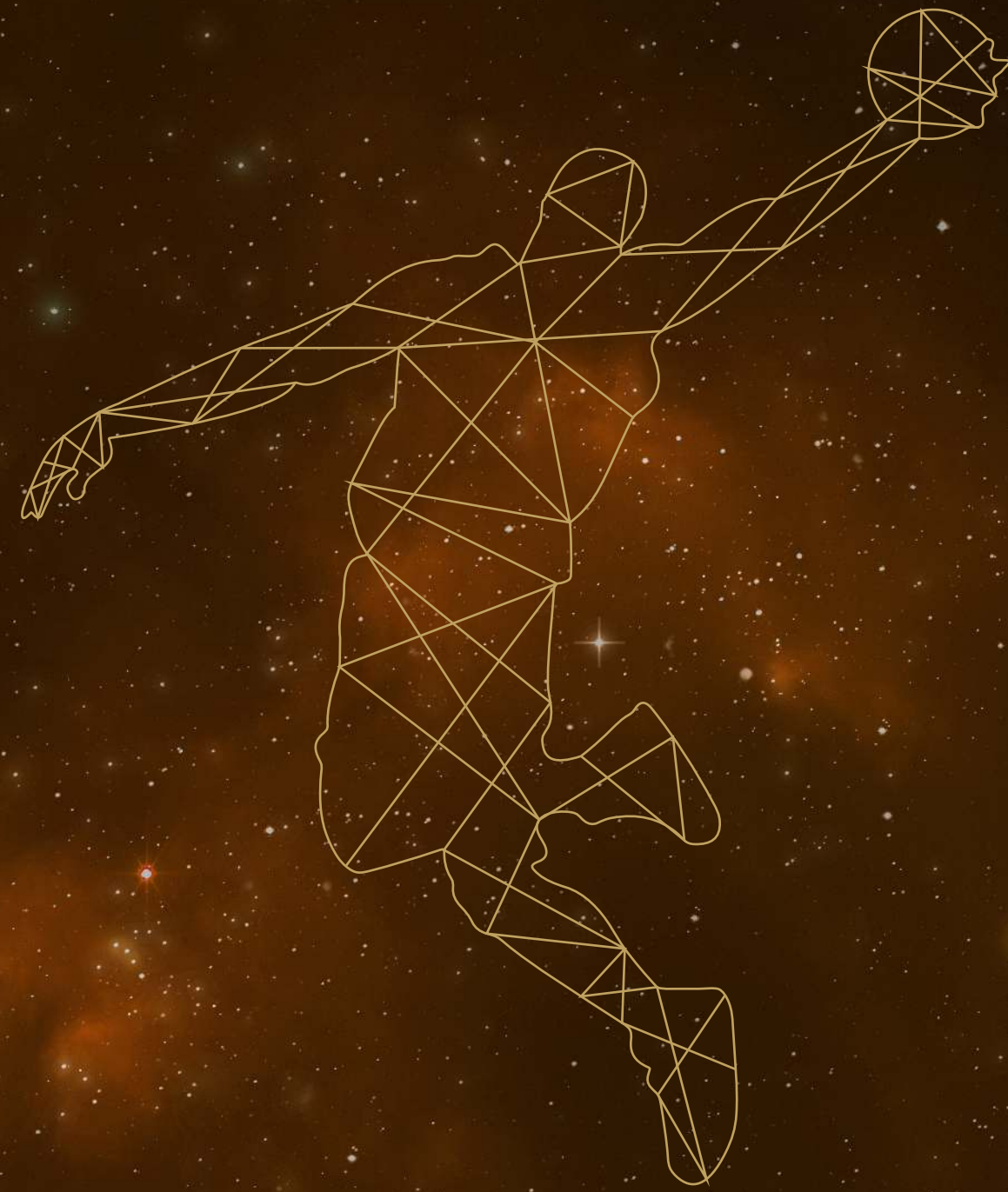
The Swimming Pool



The Robust Gymnasium



The Worthy Beauty Salon



RECREATION

If you watch a game, it's fun.
If you play it, it's recreation



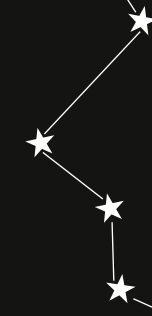
Get sporty and active playing sports including tennis, skating and badminton at our exclusive outdoor games and children play area.



Outdoor Sports | Basketball Court | Volleyball Court | Net Cricket | Lawn Tennis Court | Skating Rink
Mini Golf | Billiards | Table Tennis | Game Zone | Card Room | Carrom | Chess Room and Others | Kids Game
Kids Play Area with Slide, Swing, See Saw, Sandpit | Kids Adventure Area / Rock Climbing | Life Size Chess | Human Scale Ludo
Life Size Piano



The Birdie Golf Corner



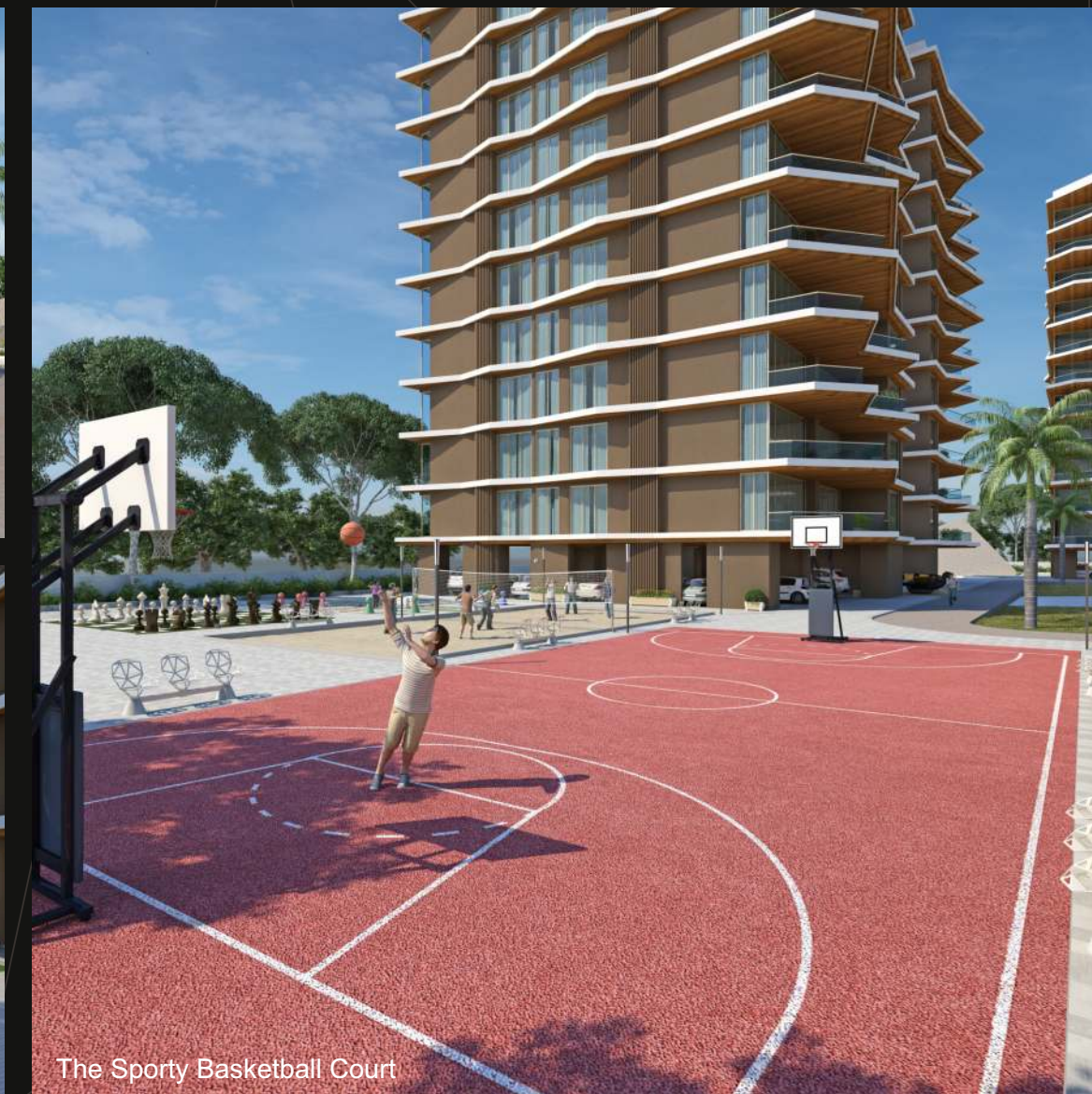
Physical strenuous activity creates the right ripples within, always



The Graceful Skating Rink



The Agile Tennis Court

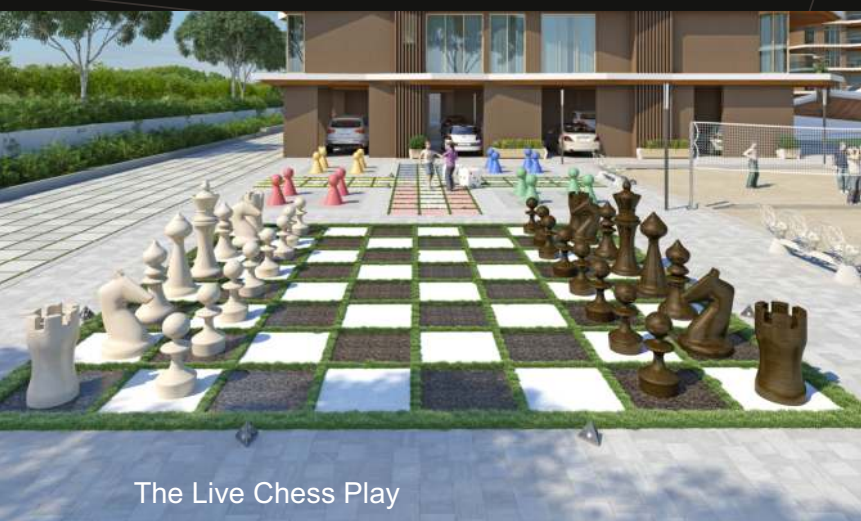


The Sporty Basketball Court

Sports require dexterity and skill,
coupled with unimaginable focus and dedication



The Zealous Playground



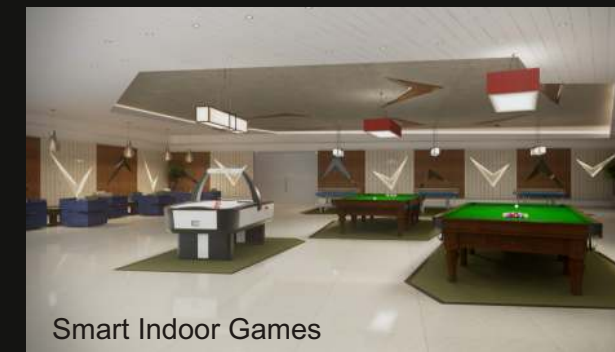
The Live Chess Play



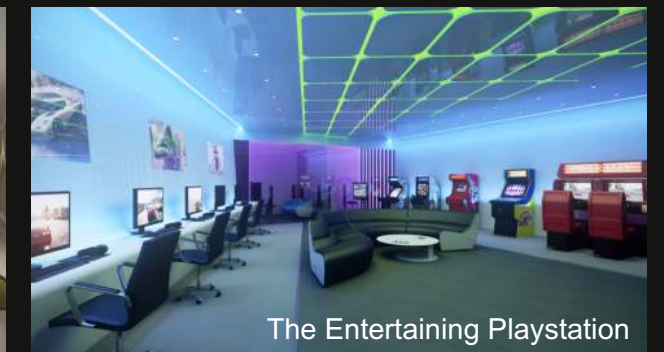
The Vigorous Badminton Court



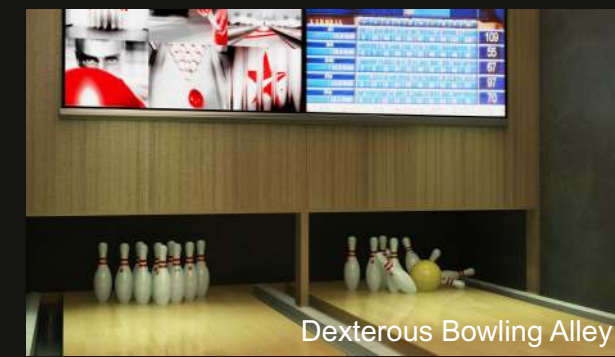
The Nurturing Nursery



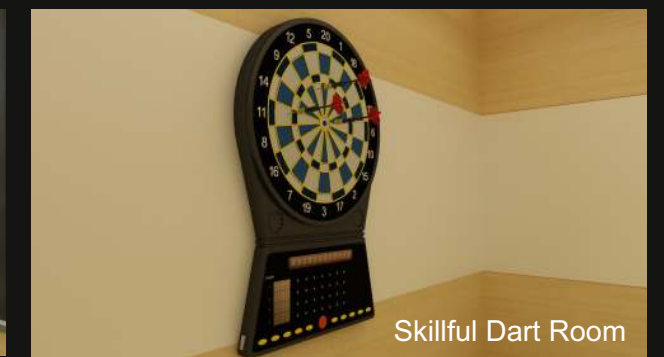
Smart Indoor Games



The Entertaining Playstation



Dexterous Bowling Alley



Skillful Dart Room



ENTERTAINMENT

We want entertainment
than education; although
entertainment
can educate our senses

Take pleasure at the mini theater or have parties at the banquet hall or party lawn. Groove to the beats at the discotheque and more.



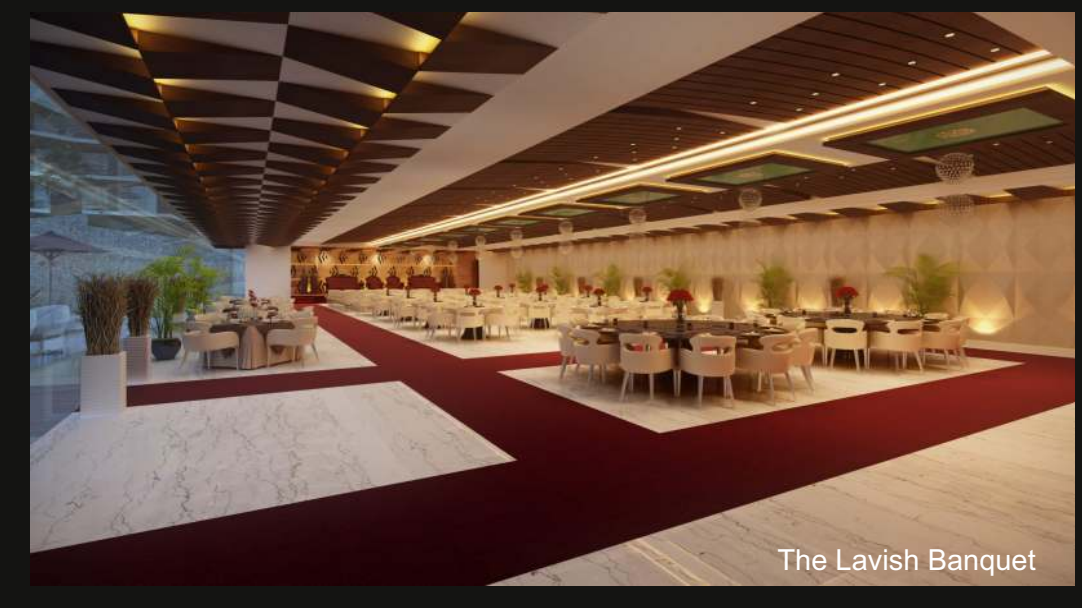
 Banquet Hall | Hunger Zone | Discotheque | 3D Theater | Open Amphitheater



The Luminous Stage



The Musical Discotheque

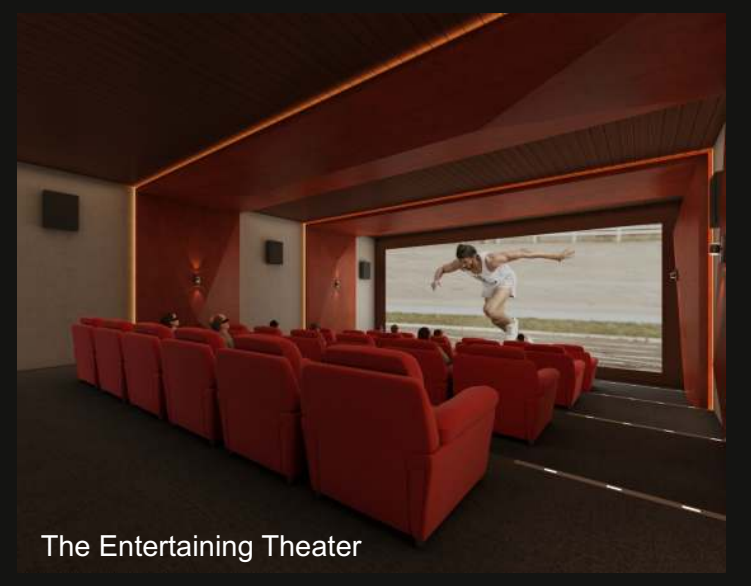


The Lavish Banquet

The opulence of stars is visible only in the realm of luxury and sophistication

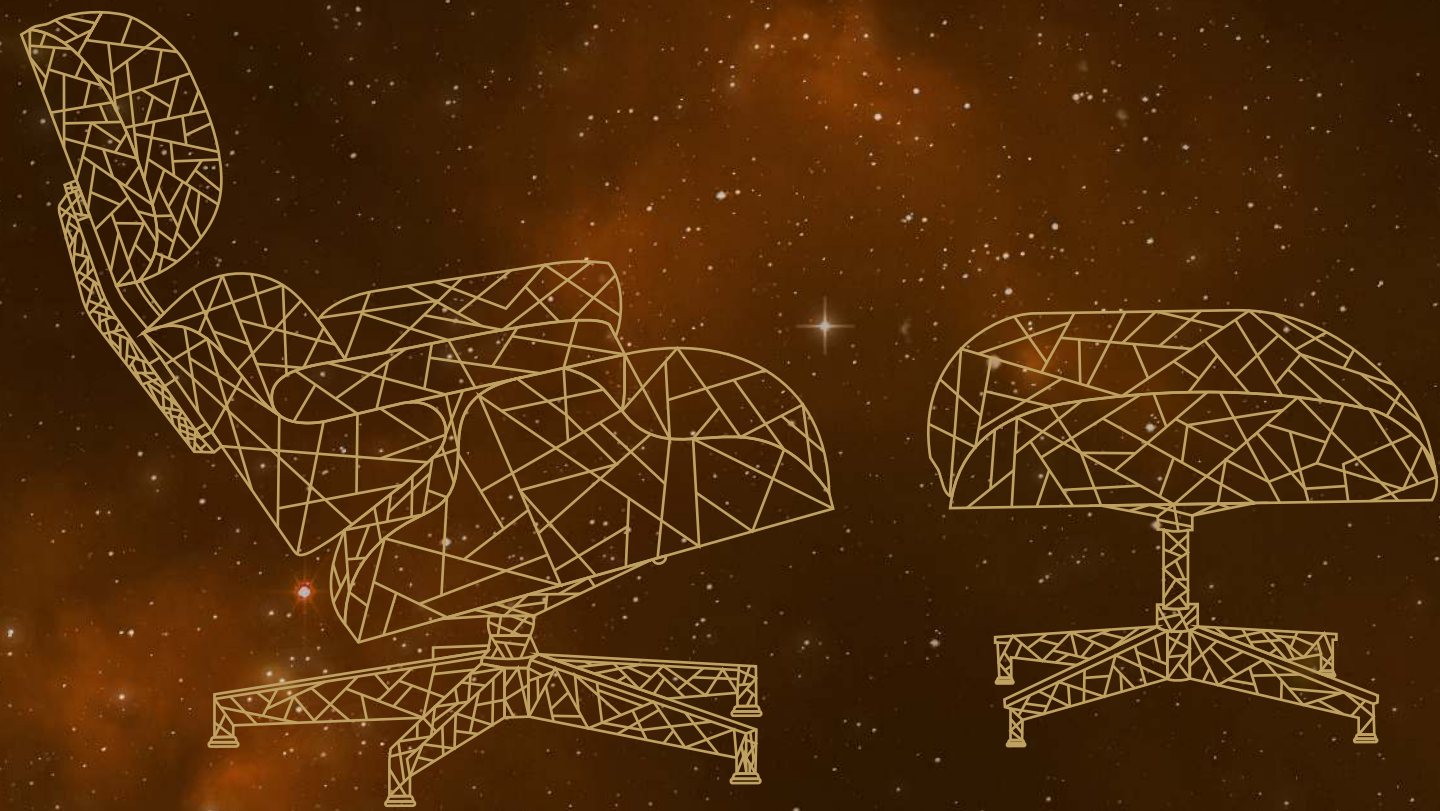


The Melodious Music Library



The Entertaining Theater





CONVENIENCE

Things are best valued when they are available when you need them the most

Make the best use of what we have provided for your convenience including the valet laundry, the in-house departmental store, key card security access and much more.



Valet Laundry (Dry Cleaning) / Press Facility | Departmental Store (Grocery / Vegetable / Dairy Product) | Key Card Security Access
Single Entry - Exit at Premises for Vigilant Security | Demarcated Common Facility for Safety | Handicap Accessibility Service
Car Wash Station | Reception Area & Lounge | Visitors Car Parking | Drop Off Plaza | Maximum Day-light & View
11' Floor Height | Multi-Ventilated Structure | Vastu-Compliant Structures | Recycled Water for Landscaping
Address Guide Map Board | Golf Car (Electric Car) Service for Pedestrians & Visitors



Triple-Height Entrance Foyer

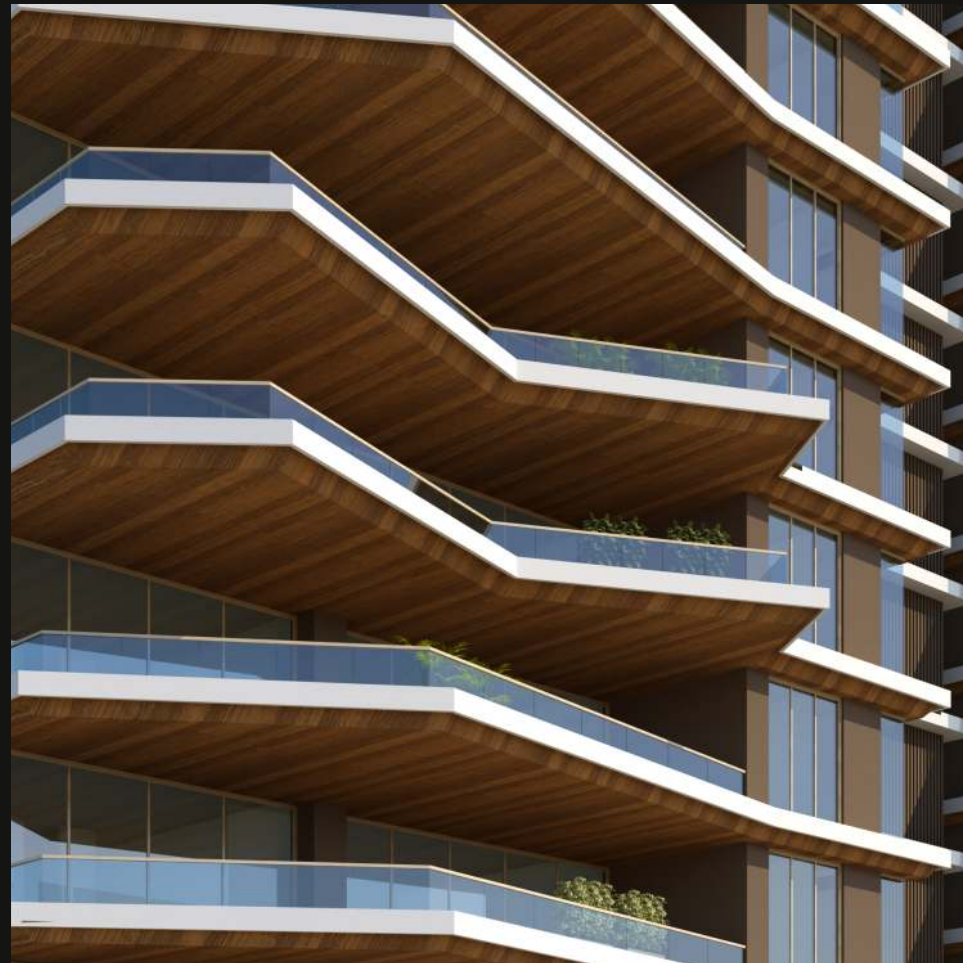
Beneath the chandeliers, is the existence of those who deserve the spotlight



Ultra-modern Conference Room

Starry Abode

The residence of stars



5 and 6 BHK Uber Luxurious Abode



Universal

10573 to 10795 sq.ft. | 6 BHK

+ Home Theater+ Gym + Sauna - Steam - Jacuzzi + Atelier + Deck



Galaxy

8467 to 8610 sq.ft. | 5 BHK

+ Home Theater + Gym + Sauna - Steam - Jacuzzi + Atelier + Deck



Star

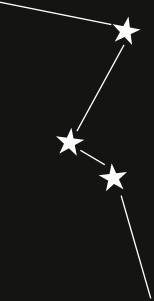
7583 to 7664 sq.ft. | 5 BHK

+ Home Theater + Gym + Sauna - Steam - Jacuzzi + Atelier + Deck

Boundless Penthouse with Private Terrace

The design of excellence trumps
the structural tenacity on all counts





Living under the canopy
of an abode, we define
ourselves of who we are



U - Type



UNIVERSAL
Section view **U1**



| U1 | | | U2 | | |
|----------|--------------------------|---------------------------|----------|--------------------------|---------------------------|
| FLAT NO. | CARPET AREA (In sq. ft.) | SALABLE AREA (In sq. ft.) | FLAT NO. | CARPET AREA (In sq. ft.) | SALABLE AREA (In sq. ft.) |
| U1-101 | 6253 | 10780 | U2-101 | 6133 | 10573 |
| U1-102 | 6249 | 10774 | U2-102 | 6261 | 10795 |
| U1-201 | 6253 | 10780 | U2-201 | 6133 | 10573 |
| U1-202 | 6249 | 10774 | U2-202 | 6261 | 10795 |
| U1-301 | 6249 | 10774 | U2-301 | 6261 | 10795 |
| U1-302 | 6253 | 10780 | U2-302 | 6133 | 10573 |
| U1-401 | 6249 | 10774 | U2-401 | 6261 | 10795 |
| U1-402 | 6253 | 10780 | U2-402 | 6133 | 10573 |
| U1-501 | 6253 | 10780 | U2-501 | 6133 | 10573 |
| U1-502 | 6249 | 10774 | U2-502 | 6261 | 10795 |
| U1-601 | 6253 | 10780 | U2-601 | 6133 | 10573 |
| U1-602 | 6249 | 10774 | U2-602 | 6261 | 10795 |
| U1-701 | 6249 | 10774 | U2-701 | 6261 | 10795 |
| U1-702 | 6253 | 10780 | U2-702 | 6133 | 10573 |
| U1-801 | 6249 | 10774 | U2-801 | 6261 | 10795 |
| U1-802 | 6253 | 10780 | U2-802 | 6133 | 10573 |
| U1-901 | 6253 | 10780 | U2-901 | 6133 | 10573 |
| U1-902 | 6249 | 10774 | U2-902 | 6261 | 10795 |
| U1-1001 | 6253 | 10780 | U2-1001 | 6133 | 10573 |
| U1-1002 | 6249 | 10774 | U2-1002 | 6261 | 10795 |
| U1-1101 | 8464 | 14592 | U2-1101 | 8343 | 14385 |
| U1-1102 | 8460 | 14585 | U2-1102 | 8472 | 14607 |

UNIVERSAL

Unit Plan Block

U1

1st, 2nd, 5th, 6th, 9th, 10th Floor

WING - 1

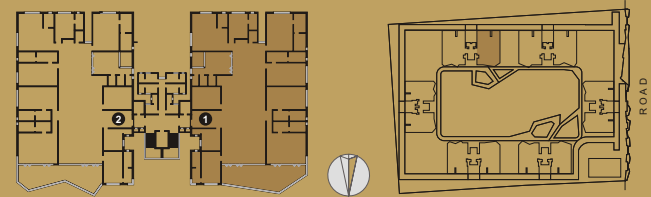
C. A. = 6253 sq.ft.

S. A. = 10780 sq.ft.



U-1 (WING - 1)

| SPACE | MEASUREMENT | AREA |
|----------------------|------------------|-----------------|
| LOBBY | 6'-7" x 7'-6" | 49.35 sq.ft. |
| ENTRANCE FOYER | 16'-8" x 10'-0" | 166.64 sq.ft. |
| LIVING ROOM | 25'-0" x 44'-0" | 1100.00 sq.ft. |
| DECK | 48'-0" LONG DECK | 620.00 sq.ft. |
| DINING | 19'-0" x 24'-4" | 462.27 sq.ft. |
| POOJA | 8'-8" x 6'-0" | 52.02 sq.ft. |
| KITCHEN | 20'-4" x 13'-0" | 264.29 sq.ft. |
| STORE | 6'-0" x 7'-11" | 47.52 sq.ft. |
| WASH | 14'-0" x 8'-3" | 115.50 sq.ft. |
| SUITE BEDROOM - 2 | 15'-0" x 21'-3" | 318.75 sq.ft. |
| A. TOILET | 7'-0" x 10'-0" | 70.00 sq.ft. |
| DRESS | 7'-0" x 10'-11" | 76.44 sq.ft. |
| SUITE BEDROOM - 1 | 22'-4" x 17'-8" | 394.57 sq.ft. |
| A. TOILET | 9'-4" x 6'-0" | 55.98 sq.ft. |
| DRESS | 9'-0" x 6'-0" | 54.00 sq.ft. |
| MASTER BEDROOM - 3 | 22'-4" x 13'-0" | 290.29 sq.ft. |
| A. TOILET | 10'-0" x 6'-0" | 60.00 sq.ft. |
| DRESS | 12'-0" x 6'-0" | 72.00 sq.ft. |
| CHILDREN BEDROOM - 5 | 22'-4" x 13'-0" | 290.29 sq.ft. |
| A. TOILET | 9'-4" x 6'-0" | 55.98 sq.ft. |
| DRESS | 9'-0" x 6'-0" | 54.00 sq.ft. |
| MASTER BEDROOM - 4 | 11'-0" x 18'-0" | 198.00 sq.ft. |
| A. TOILET | 5'-0" x 9'-0" | 45.00 sq.ft. |
| DRESS | 5'-0" x 8'-8" | 43.35 sq.ft. |
| GUEST BEDROOM - 6 | 11'-0" x 14'-3" | 156.75 sq.ft. |
| A. TOILET | 5'-0" x 9'-5" | 47.10 sq.ft. |
| HOME THEATRE | 16'-4" x 13'-0" | 212.29 sq.ft. |
| P. TOILET | 5'-0" x 6'-6" | 32.50 sq.ft. |
| GYM | 15'-0" x 13'-0" | 195.00 sq.ft. |
| SAUNA | 4'-8" x 6'-0" | 27.00 sq.ft. |
| STEAM | 4'-6" x 6'-0" | 27.00 sq.ft. |
| CHAGING ROOM | 4'-0" x 6'-0" | 24.00 sq.ft. |
| JACUZZI | 7'-0" x 8'-8" | 60.69 sq.ft. |
| ATELIER | 11'-0" x 12'-6" | 137.50 sq.ft. |
| TOILET | 5'-0" x 3'-6" | 17.50 sq.ft. |
| SERVANT ROOM | 7'-2" x 5'-6" | 39.41 sq.ft. |
| TOILET | 3'-6" x 5'-6" | 19.25 sq.ft. |
| COOK ROOM | 7'-2" x 5'-6" | 39.41 sq.ft. |
| TOILET | 3'-6" x 5'-6" | 19.25 sq.ft. |
| DRIVER ROOM | 7'-2" x 5'-6" | 39.41 sq.ft. |
| TOILET | 3'-6" x 5'-6" | 19.25 sq.ft. |
| PASSAGES + DOOR SILL | - | 182.76 sq.ft. |
| TOTAL CARPET AREA | - | 6252.31 sq.ft. |
| SUPER BUILTUP AREA | - | 10780.00 sq.ft. |



UNIVERSAL

Pent House

U1

11th, 12th Floor

WING - 1

C. A. = 8464 sq.ft.

S. A. = 14592 sq.ft.



U-1 (WING - 1)

| SPACE | MEASUREMENT | AREA |
|---|------------------|-----------------|
| LOBBY | 6'-7" x 7'-6" | 49.35 sq.ft. |
| ENTRANCE FOYER | 16'-8" x 10'-0" | 166.64 sq.ft. |
| LIVING ROOM | 25'-0" x 44'-0" | 1100.00 sq.ft. |
| DECK | 48'-0" LONG DECK | 620.00 sq.ft. |
| DINING | 19'-0" x 24'-4" | 462.27 sq.ft. |
| POOJA | 8'-8" x 6'-0" | 52.02 sq.ft. |
| KITCHEN | 20'-4" x 13'-0" | 264.29 sq.ft. |
| STORE | 6'-0" x 7'-11" | 47.52 sq.ft. |
| WASH | 14'-0" x 8'-3" | 115.50 sq.ft. |
| SUITE BEDROOM - 2 | 15'-0" x 21'-3" | 318.75 sq.ft. |
| A. TOILET | 7'-0" x 10'-0" | 70.00 sq.ft. |
| DRESS | 7'-0" x 10'-11" | 76.44 sq.ft. |
| SUITE BEDROOM - 1 | 22'-4" x 17'-8" | 394.57 sq.ft. |
| A. TOILET | 9'-4" x 6'-0" | 55.98 sq.ft. |
| DRESS | 9'-0" x 6'-0" | 54.00 sq.ft. |
| MASTER BEDROOM - 3 | 22'-4" x 13'-0" | 290.29 sq.ft. |
| A. TOILET | 10'-0" x 6'-0" | 60.00 sq.ft. |
| DRESS | 12'-0" x 6'-0" | 72.00 sq.ft. |
| CHILDREN BEDROOM - 5 | 22'-4" x 13'-0" | 290.29 sq.ft. |
| A. TOILET | 9'-4" x 6'-0" | 55.98 sq.ft. |
| DRESS | 9'-0" x 6'-0" | 54.00 sq.ft. |
| MASTER BEDROOM - 4 | 11'-0" x 18'-0" | 198.00 sq.ft. |
| A. TOILET | 5'-0" x 9'-0" | 45.00 sq.ft. |
| DRESS | 5'-0" x 8'-8" | 43.35 sq.ft. |
| GUEST BEDROOM - 6 | 11'-0" x 14'-3" | 156.75 sq.ft. |
| A. TOILET | 5'-0" x 9'-5" | 47.10 sq.ft. |
| STAIR | 16'-4" x 13'-0" | 212.29 sq.ft. |
| P. TOILET | 5'-0" x 6'-6" | 32.50 sq.ft. |
| GYM | 15'-0" x 13'-0" | 195.00 sq.ft. |
| SAUNA | 4'-8" x 6'-0" | 27.00 sq.ft. |
| STEAM | 4'-6" x 6'-0" | 27.00 sq.ft. |
| CHANGING ROOM | 4'-0" x 6'-0" | 24.00 sq.ft. |
| JACUZZI | 7'-0" x 8'-8" | 60.69 sq.ft. |
| ATELIER | 11'-0" x 12'-6" | 137.50 sq.ft. |
| TOILET | 5'-0" x 3'-6" | 17.50 sq.ft. |
| SERVANT ROOM | 7'-2" x 5'-6" | 39.41 sq.ft. |
| TOILET | 3'-6" x 5'-6" | 19.25 sq.ft. |
| COOK ROOM | 7'-2" x 5'-6" | 39.41 sq.ft. |
| TOILET | 3'-6" x 5'-6" | 19.25 sq.ft. |
| DRIVER ROOM | 7'-2" x 5'-6" | 39.41 sq.ft. |
| TOILET | 3'-6" x 5'-6" | 19.25 sq.ft. |
| PASSAGES + DOOR SILL | - | 182.76 sq.ft. |
| TOTAL CARPET AREA OF 11th FLOOR | - | 6252.31 sq.ft. |
| PRIVATE TERRACE CARPET AREA 3292/2 | - | 1646.00 sq.ft. |
| CABIN & STAIR AREA 12th FLOOR | - | 564.90 sq.ft. |
| 11th FLOOR + 12th FLOOR CARPET AREA | - | 8464.00 sq.ft. |
| 11th FLOOR + 12th FLOOR SUPER BUILT-UP AREA | - | 14592.00 sq.ft. |



G - Type



GALAXY
Section view **G1**



| G1 | | | G2 | | |
|----------|--------------------------|---------------------------|----------|--------------------------|---------------------------|
| FLAT NO. | CARPET AREA (In sq. ft.) | SALABLE AREA (In sq. ft.) | FLAT NO. | CARPET AREA (In sq. ft.) | SALABLE AREA (In sq. ft.) |
| G1-101 | 4972 | 8572 | G2-101 | 4994 | 8610 |
| G1-102 | 4911 | 8467 | G2-102 | 4981 | 8587 |
| G1-201 | 4972 | 8572 | G2-201 | 4994 | 8610 |
| G1-202 | 4911 | 8467 | G2-202 | 4981 | 8587 |
| G1-301 | 4911 | 8467 | G2-301 | 4981 | 8587 |
| G1-302 | 4972 | 8572 | G2-302 | 4994 | 8610 |
| G1-401 | 4911 | 8467 | G2-401 | 4981 | 8587 |
| G1-402 | 4972 | 8572 | G2-402 | 4994 | 8610 |
| G1-501 | 4972 | 8572 | G2-501 | 4994 | 8610 |
| G1-502 | 4911 | 8467 | G2-502 | 4981 | 8587 |
| G1-601 | 4972 | 8572 | G2-601 | 4994 | 8610 |
| G1-602 | 4911 | 8467 | G2-602 | 4981 | 8587 |
| G1-701 | 4911 | 8467 | G2-701 | 4981 | 8587 |
| G1-702 | 4972 | 8572 | G2-702 | 4994 | 8610 |
| G1-801 | 4911 | 8467 | G2-801 | 4981 | 8587 |
| G1-802 | 4972 | 8572 | G2-802 | 4994 | 8610 |
| G1-901 | 4972 | 8572 | G2-901 | 4994 | 8610 |
| G1-902 | 4911 | 8467 | G2-902 | 4981 | 8587 |
| G1-1001 | 4972 | 8572 | G2-1001 | 4994 | 8610 |
| G1-1002 | 4911 | 8467 | G2-1002 | 4981 | 8587 |
| G1-1101 | 6490 | 11190 | G2-1101 | 6560 | 11310 |
| G1-1102 | 6552 | 11285 | G2-1102 | 6573 | 11333 |

GALAXY

Unit Plan Block

1st, 2nd, 5th, 6th, 9th, 10th Floor

G1

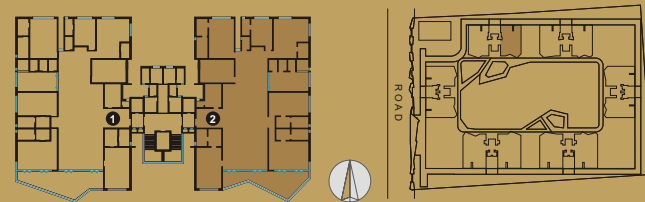
WING - 2

C. A. = 4911 sq.ft.

S. A. = 8467 sq.ft.



| SPACE | MEASUREMENT | AREA |
|----------------------|------------------|----------------|
| LOBBY | 6'-7" x 7'-6" | 49.35 sq.ft. |
| ENTRANCE FOYER | 13'-4" x 10'-0" | 133.32 sq.ft. |
| LIVING ROOM | 23'-0" x 37'-0" | 851.00 sq.ft. |
| DECK | 44'-0" LONG DECK | 406.30 sq.ft. |
| DINING | 16'-8" x 23'-6" | 391.60 sq.ft. |
| POOJA | 6'-4" x 6'-6" | 41.15 sq.ft. |
| KITCHEN | 12'-0" x 20'-3" | 243.00 sq.ft. |
| STORE | 4'-8" x 8'-0" | 37.31 sq.ft. |
| WASH | 5'-0" x 11'-11" | 59.56 sq.ft. |
| SUITE BEDROOM - 1 | 20'-4" x 14'-10" | 301.52 sq.ft. |
| A. TOILET | 9'-0" x 5'-10" | 52.47 sq.ft. |
| DRESS | 7'-4" x 5'-10" | 42.74 sq.ft. |
| CHILDREN BEDROOM - 4 | 20'-4" x 12'-0" | 243.98 sq.ft. |
| A. TOILET | 9'-0" x 5'-10" | 52.47 sq.ft. |
| DRESS | 7'-4" x 5'-10" | 42.74 sq.ft. |
| GUEST BEDROOM - 5 | 11'-0" x 13'-11" | 153.04 sq.ft. |
| A. TOILET | 4'-4" x 8'-9" | 37.90 sq.ft. |
| SUITE BEDROOM - 2 | 14'-0" x 20'-3" | 283.50 sq.ft. |
| A. TOILET | 6'-0" x 11'-0" | 66.00 sq.ft. |
| DRESS | 6'-0" x 8'-11" | 53.47 sq.ft. |
| MASTER BEDROOM - 3 | 13'-0" x 21'-0" | 273.00 sq.ft. |
| A. TOILET | 5'-8" x 9'-0" | 50.97 sq.ft. |
| DRESS | 7'-0" x 9'-0" | 63.00 sq.ft. |
| HOME THEATRE | 17'-6" x 12'-0" | 210.00 sq.ft. |
| P. TOILET | 4'-4" x 6'-10" | 29.58 sq.ft. |
| GYM | 20'-4" x 10'-0" | 203.32 sq.ft. |
| SAUNA | 4'-6" x 6'-0" | 27.00 sq.ft. |
| STEAM | 4'-6" x 6'-0" | 27.00 sq.ft. |
| JACUZZI | 6'-0" x 6'-0" | 36.00 sq.ft. |
| CHANGING ROOM | 4'-4" x 6'-0" | 25.99 sq.ft. |
| ATELIER | 8'-8" x 12'-2" | 105.40 sq.ft. |
| TOILET | 4'-0" x 3'-8" | 14.00 sq.ft. |
| SERVANT ROOM | 6'-6" x 8'-0" | 52.00 sq.ft. |
| TOILET | 4'-0" x 6'-0" | 24.00 sq.ft. |
| DRIVER ROOM | 6'-4" x 8'-0" | 50.65 sq.ft. |
| TOILET | 4'-0" x 8'-0" | 32.00 sq.ft. |
| PASSAGES + DOOR SILL | | 144.21 sq.ft. |
| TOTAL CARPET AREA | | 4910.54 sq.ft. |
| SUPER BUILTUP AREA | | 8467.00 sq.ft. |



GALAXY

Pent House

11th, 12th Floor

G1

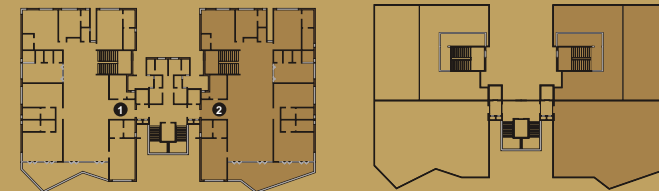
WING - 2

C. A. = 6552 sq.ft.

S. A. = 11295 sq.ft.



| SPACE | MEASUREMENT | AREA |
|--|------------------|-----------------|
| LOBBY | 6'-7" x 7'-6" | 49.35 sq.ft. |
| ENTRANCE FOYER | 13'-4" x 10'-0" | 133.32 sq.ft. |
| LIVING ROOM | 23'-0" x 37'-0" | 851.00 sq.ft. |
| DECK | 44'-0" LONG DECK | 406.30 sq.ft. |
| DINING | 16'-8" x 23'-6" | 391.60 sq.ft. |
| POOJA | 6'-4" x 6'-6" | 41.15 sq.ft. |
| KITCHEN | 12'-0" x 20'-3" | 243.00 sq.ft. |
| STORE | 4'-8" x 8'-0" | 37.31 sq.ft. |
| WASH | 5'-0" x 11'-11" | 59.56 sq.ft. |
| SUITE BEDROOM - 1 | 20'-4" x 14'-10" | 301.52 sq.ft. |
| A. TOILET | 9'-0" x 5'-10" | 52.47 sq.ft. |
| DRESS | 7'-4" x 5'-10" | 42.74 sq.ft. |
| CHILDREN BEDROOM - 4 | 20'-4" x 12'-0" | 243.98 sq.ft. |
| A. TOILET | 9'-0" x 5'-10" | 52.47 sq.ft. |
| DRESS | 7'-4" x 5'-10" | 42.74 sq.ft. |
| GUEST BEDROOM - 5 | 11'-0" x 13'-11" | 153.04 sq.ft. |
| A. TOILET | 4'-4" x 8'-9" | 37.90 sq.ft. |
| SUITE BEDROOM - 2 | 14'-0" x 20'-3" | 283.50 sq.ft. |
| A. TOILET | 6'-0" x 11'-0" | 66.00 sq.ft. |
| DRESS | 6'-0" x 8'-11" | 53.47 sq.ft. |
| MASTER BEDROOM - 3 | 13'-0" x 21'-0" | 273.00 sq.ft. |
| A. TOILET | 5'-8" x 9'-0" | 50.97 sq.ft. |
| DRESS | 7'-0" x 9'-0" | 63.00 sq.ft. |
| STAIR | 17'-6" x 12'-0" | 210.00 sq.ft. |
| P. TOILET | 4'-4" x 6'-10" | 29.58 sq.ft. |
| GYM | 20'-4" x 10'-0" | 203.32 sq.ft. |
| SAUNA | 4'-6" x 6'-0" | 27.00 sq.ft. |
| STEAM | 4'-6" x 6'-0" | 27.00 sq.ft. |
| JACUZZI | 6'-0" x 6'-0" | 36.00 sq.ft. |
| CHANGING ROOM | 4'-4" x 6'-0" | 25.99 sq.ft. |
| ATELIER | 8'-8" x 12'-2" | 105.40 sq.ft. |
| TOILET | 4'-0" x 3'-8" | 14.00 sq.ft. |
| SERVANT ROOM | 6'-6" x 8'-0" | 52.00 sq.ft. |
| TOILET | 4'-0" x 6'-0" | 24.00 sq.ft. |
| DRIVER ROOM | 6'-4" x 8'-0" | 50.65 sq.ft. |
| TOILET | 4'-0" x 8'-0" | 32.00 sq.ft. |
| PASSAGES + DOOR SILL | | 143.03 sq.ft. |
| TOTAL CARPET AREA OF 11 th FLOOR | | 4971.76 sq.ft. |
| PRIVATE TERRACE CARPET AREA 2255/2 | | 1127.50 sq.ft. |
| CABIN & STAIR AREA 12 th FLOOR | | 452.19 sq.ft. |
| 11 th FLOOR + 12 th FLOOR CARPET AREA | | 6552.00 sq.ft. |
| 11 th FLOOR + 12 th FLOOR SUPER BUILTUP AREA | | 11295.00 sq.ft. |



S - Type



STAR
Section view **S1**



| S1 | | | S2 | | |
|----------|--------------------------|---------------------------|----------|--------------------------|---------------------------|
| FLAT NO. | CARPET AREA (In sq. ft.) | SALABLE AREA (In sq. ft.) | FLAT NO. | CARPET AREA (In sq. ft.) | SALABLE AREA (In sq. ft.) |
| S1-101 | 4398 | 7583 | S2-101 | 4428 | 7634 |
| S1-102 | 4434 | 7645 | S2-102 | 4445 | 7664 |
| S1-201 | 4398 | 7583 | S2-201 | 4428 | 7634 |
| S1-202 | 4434 | 7645 | S2-202 | 4445 | 7664 |
| S1-301 | 4434 | 7645 | S2-301 | 4445 | 7664 |
| S1-302 | 4398 | 7583 | S2-302 | 4428 | 7634 |
| S1-401 | 4434 | 7645 | S2-401 | 4445 | 7664 |
| S1-402 | 4398 | 7583 | S2-402 | 4428 | 7634 |
| S1-501 | 4398 | 7583 | S2-501 | 4428 | 7634 |
| S1-502 | 4434 | 7645 | S2-502 | 4445 | 7664 |
| S1-601 | 4398 | 7583 | S2-601 | 4428 | 7634 |
| S1-602 | 4434 | 7645 | S2-602 | 4445 | 7664 |
| S1-701 | 4434 | 7645 | S2-701 | 4445 | 7664 |
| S1-702 | 4398 | 7583 | S2-702 | 4428 | 7634 |
| S1-801 | 4434 | 7645 | S2-801 | 4445 | 7664 |
| S1-802 | 4398 | 7583 | S2-802 | 4428 | 7634 |
| S1-901 | 4398 | 7583 | S2-901 | 4428 | 7634 |
| S1-902 | 4434 | 7645 | S2-902 | 4445 | 7664 |
| S1-1001 | 4398 | 7583 | S2-1001 | 4428 | 7634 |
| S1-1002 | 4434 | 7645 | S2-1002 | 4445 | 7664 |
| S1-1101 | 5895 | 10163 | S2-1101 | 5906 | 10182 |
| S1-1102 | 5859 | 10101 | S2-1102 | 5888 | 10152 |

STAR

Unit Plan Block

S1

1st, 2nd, 5th, 6th, 9th, 10th Floor

WING - 2

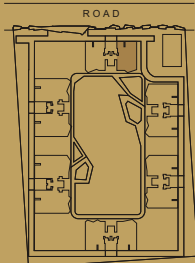
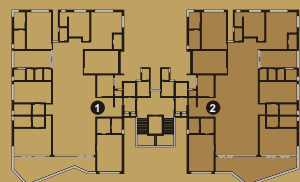
C. A. = 4434 sq.ft.

S. A. = 7645 sq.ft.



S-1 (WING - 2)

| SPACE | MEASUREMENT | AREA |
|---------------------|-----------------|----------------|
| LOBBY | 6-7" x 5-4" | 35.08 sq.ft. |
| ENTRANCE FOYER | 13-4" x 10-0" | 133.32 sq.ft. |
| LIVING ROOM | 22-0" x 35-0" | 770 sq.ft. |
| DECK | 42-0" WIDE DECK | 428.14 sq.ft. |
| DINING | 15-8" x 22-6" | 352.44 sq.ft. |
| POOJA | 6-4" x 5-6" | 34.82 sq.ft. |
| KITCHEN | 11-0" x 19-3" | 211.75 sq.ft. |
| STORE | 4-8" x 8-0" | 37.31 sq.ft. |
| WASH | 5-0" x 10-11" | 54.56 sq.ft. |
| SUITE BEDROOM-1 | 19-4" x 13-10" | 267.36 sq.ft. |
| A. TOILET | 9-0" x 5-10" | 52.47 sq.ft. |
| DRESS | 6-4" x 5-10" | 36.91 sq.ft. |
| CHILDREN BEDROOM-4 | 19-4" x 11-0" | 212.52 sq.ft. |
| A. TOILET | 9-0" x 5-10" | 52.47 sq.ft. |
| DRESS | 6-4" x 5-10" | 36.91 sq.ft. |
| MASTER BEDROOM-2 | 13-0" x 19-3" | 250.25 sq.ft. |
| A. TOILET | 6-0" x 10-0" | 60 sq.ft. |
| DRESS | 6-0" x 8-11" | 53.47 sq.ft. |
| GUEST BEDROOM-5 | 11-0" x 12-11" | 142.04 sq.ft. |
| A. TOILET | 4-4" x 7-9" | 31.40 sq.ft. |
| MASTER BEDROOM-3 | 13-0" x 19-0" | 247 sq.ft. |
| A. TOILET | 5-6" x 8-0" | 44 sq.ft. |
| DRESS | 7-2" x 8-0" | 57.32 sq.ft. |
| HOME THEATER | 17-6" x 12-0" | 210 sq.ft. |
| P. TOILET | 4-4" x 6-10" | 29.58 sq.ft. |
| GYM | 19-4" x 9-0" | 173.98 sq.ft. |
| SAUNA | 4-2" x 6-0" | 24.99 sq.ft. |
| STEAM | 4-2" x 6-0" | 24.99 sq.ft. |
| JACUZZI | 6-0" x 6-0" | 36 sq.ft. |
| CHAGING ROOM | 4-0" x 6-0" | 24 sq.ft. |
| ATELIER | 8-8" x 11-2" | 96.74 sq.ft. |
| TOILET | 4-0" x 3-6" | 14 sq.ft. |
| SERVANT ROOM | 6-6" x 8-0" | 52 sq.ft. |
| TOILET | 4-0" x 6-0" | 24 sq.ft. |
| PASSAGES +DOOR SILL | | 122.16 sq.ft. |
| TOTAL CARPET AREA | | 4433.98 sq.ft. |
| SUPER BUILTUP AREA | | 7645.00 sq.ft. |



STAR

Pent House

S1

11th, 12th Floor

WING - 2

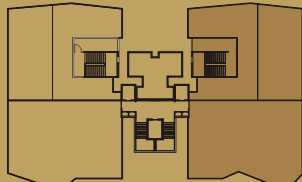
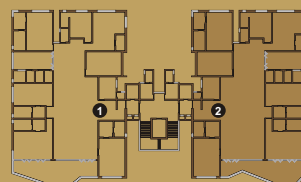
C. A. = 5859 sq.ft.

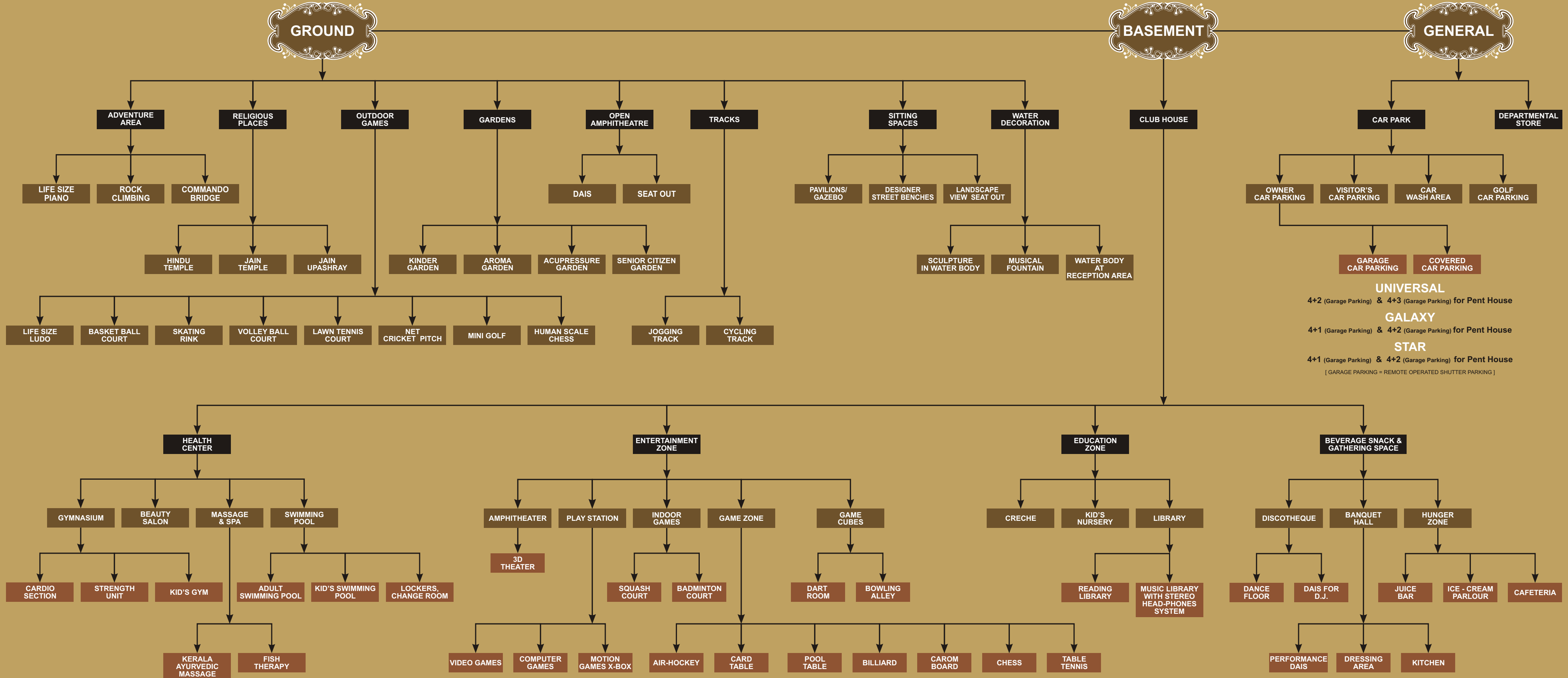
S. A. = 10101 sq.ft.



S-1 (WING - 2)

| SPACE | MEASUREMENT | AREA |
|---|-----------------|-----------------|
| LOBBY | 6-7" x 5-4" | 35.08 sq.ft. |
| ENTRANCE FOYER | 13-4" x 10-0" | 133.32 sq.ft. |
| LIVING ROOM | 22-0" x 35-0" | 770 sq.ft. |
| DECK | 42-0" WIDE DECK | 391.77 sq.ft. |
| DINING | 15-8" x 22-6" | 352.44 sq.ft. |
| POOJA | 6-4" x 5-6" | 34.82 sq.ft. |
| KITCHEN | 11-0" x 19-3" | 211.75 sq.ft. |
| STORE | 4-8" x 8-0" | 37.31 sq.ft. |
| WASH | 5-0" x 10-11" | 54.56 sq.ft. |
| SUITE BEDROOM-1 | 19-4" x 13-10" | 267.36 sq.ft. |
| A. TOILET | 9-0" x 5-10" | 52.47 sq.ft. |
| DRESS | 6-4" x 5-10" | 36.91 sq.ft. |
| CHILDREN BEDROOM-4 | 19-4" x 11-0" | 212.52 sq.ft. |
| A. TOILET | 9-0" x 5-10" | 52.47 sq.ft. |
| DRESS | 6-4" x 5-10" | 36.91 sq.ft. |
| MASTER BEDROOM-2 | 13-0" x 19-3" | 250.25 sq.ft. |
| A. TOILET | 6-0" x 10-0" | 60 sq.ft. |
| DRESS | 6-0" x 8-11" | 53.47 sq.ft. |
| GUEST BEDROOM-5 | 11-0" x 12-11" | 142.04 sq.ft. |
| A. TOILET | 4-4" x 7-9" | 31.40 sq.ft. |
| MASTER BEDROOM-3 | 13-0" x 19-0" | 247 sq.ft. |
| A. TOILET | 5-6" x 8-0" | 44 sq.ft. |
| DRESS | 7-2" x 8-0" | 57.32 sq.ft. |
| STAIR | 17-8" x 12-0" | 210 sq.ft. |
| P. TOILET | 4-4" x 6-10" | 29.58 sq.ft. |
| GYM | 19-4" x 9-0" | 173.98 sq.ft. |
| SAUNA | 4-2" x 6-0" | 24.99 sq.ft. |
| STEAM | 4-2" x 6-0" | 24.99 sq.ft. |
| JACUZZI | 6-0" x 6-0" | 36 sq.ft. |
| CHANGING ROOM | 4-0" x 6-0" | 24 sq.ft. |
| ATELIER | 8-8" x 11-2" | 96.74 sq.ft. |
| TOILET | 4-0" x 3-6" | 14 sq.ft. |
| SERVANT ROOM | 6-6" x 8-0" | 52 sq.ft. |
| TOILET | 4-0" x 6-0" | 24 sq.ft. |
| PASSAGES +DOOR SILL | | 122.37 sq.ft. |
| TOTAL CARPET AREA OF 11" FLOOR | | 4397.82 sq.ft. |
| PRIVATE TERRACE CARPET AREA 2088/2 | | 1034.00 sq.ft. |
| CABIN & STAIR AREA 12" FLOOR | | 426.31 sq.ft. |
| 11" FLOOR + 12" FLOOR CARPET AREA | | 5859.00 sq.ft. |
| 11" FLOOR + 12" FLOOR SUPER BUILT-UP AREA | | 10101.00 sq.ft. |



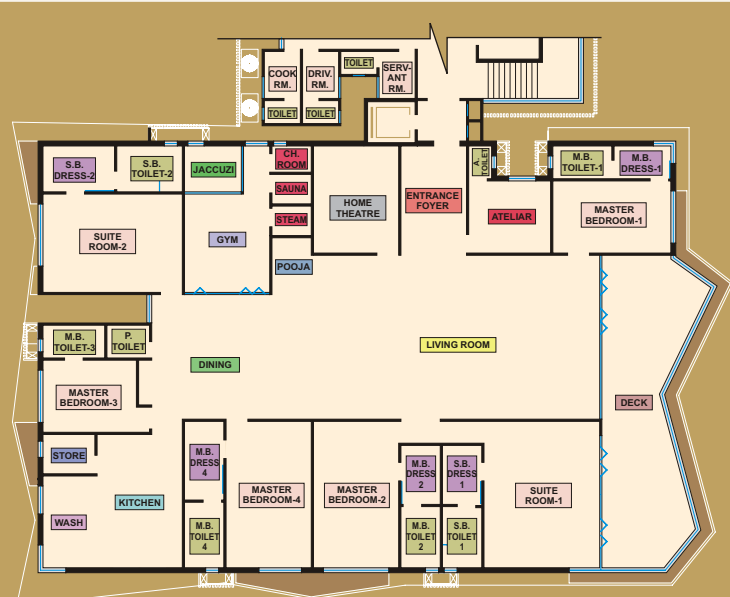


UNIVERSAL
 4+2 (Garage Parking) & 4+3 (Garage Parking) for Pent House

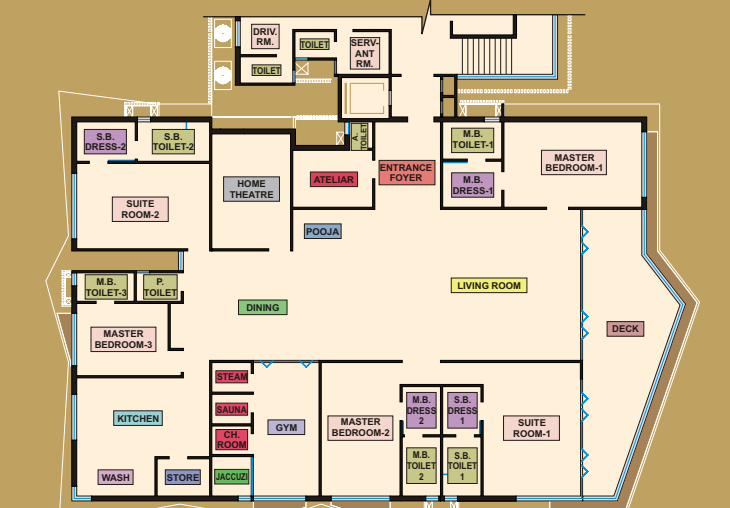
GALAXY
 4+1 (Garage Parking) & 4+2 (Garage Parking) for Pent House

STAR
 4+1 (Garage Parking) & 4+2 (Garage Parking) for Pent House

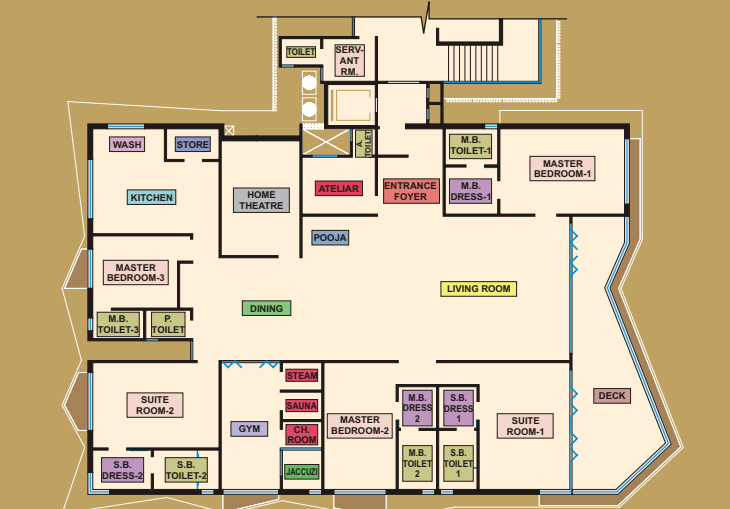
[GARAGE PARKING = REMOTE OPERATED SHUTTER PARKING]



UNIVERSAL - U1 & U2



GALAXY - G1 & G2



STAR- S1 & S2

| COLOUR CODE | ROOM NAME | DADO / SKIRTING | | | DOOR | | WINDOW / VENTILATION | | | WALL FINISH | |
|-------------|------------------------------|------------------|-----------------|--|---|-----------------------------|-----------------------------------|--------------------|-----------------------------|----------------|--|
| | | FLOOR FINISH | LEVEL | MATERIAL | SHUTTER | FRAME | SHUTTER | SHUTTER FRAME | FRAME | 1ST COAT | 2ND COAT |
| | ENTRANCE FOYER | ITALIAN MARBLE | 3" HEIGHT | ITALIAN MARBLE | VENEER FINISHED SAFETY DOOR WITH MATTE POLISH | TEAK WOOD WITH MATTE POLISH | | | TEAK WOOD WITH MATTE POLISH | GYPSUM PLASTER | WHITE LAPI FINISH |
| | LIVING ROOM | ITALIAN MARBLE | 3" HEIGHT | ITALIAN MARBLE | VENEER FINISHED DOOR WITH MATTE POLISH | TEAK WOOD WITH MATTE POLISH | GSFD (GLASS SLIDING FOLDING DOOR) | | ITALIAN MARBLE | GYPSUM PLASTER | WHITE LAPI FINISH |
| | DINING ROOM | ITALIAN MARBLE | 3" HEIGHT | ITALIAN MARBLE | | | DGU | ALUMINIUM ANODIZED | ITALIAN MARBLE | GYPSUM PLASTER | WHITE LAPI FINISH |
| | KITCHEN | ITALIAN MARBLE | 9'-0" HEIGHT | ITALIAN MARBLE (QUARTZ PLATFORM) | | | DGU | ALUMINIUM ANODIZED | ITALIAN MARBLE | GYPSUM PLASTER | WHITE LAPI FINISH |
| | DECK | WOODEN DECK | 3" HEIGHT | WOODEN SKIRTING | DOUBLE GLAZED REFLECTIVE GLASS S. FD. | COMPOSITE MARBLE | | | | GYPSUM PLASTER | WHITE LAPI FINISH |
| | GYM | RUBBER FLOORING | | | DESIGNER GLASS DOOR | COMPOSITE MARBLE | DGU | ALUMINIUM ANODIZED | COMPOSITE MARBLE | GYPSUM PLASTER | WHITE LAPI FINISH |
| | POOJA | ITALIAN MARBLE | 3" HEIGHT | ITALIAN MARBLE | | | | | | GYPSUM PLASTER | WHITE LAPI FINISH |
| | STEAM | GRANITE | 9" HEIGHT | GRANITE/GRANAMITE | VENEER FINISHED FLUSH DOOR WITH MATTE POLISH | COMPOSITE MARBLE | | | | ROUGH PLASTER | VITRIFIED TILES |
| | SAUNA | PINE-WOOD PANELS | PINE WOOD PANEL | PINE WOOD PANEL | VENEER FINISHED FLUSH DOOR WITH MATTE POLISH | PINE WOOD | | | | MALA PLASTER | PINE-WOOD PANELS |
| | CHANGE ROOM | VITRIFIED TILES | 9'-0" HEIGHT | VITRIFIED TILES | DESIGNER GLASS DOOR | COMPOSITE MARBLE | | | | ROUGH PLASTER | VITRIFIED TILES |
| | JACUZZI | MOSAIC TILES | 9'-0" HEIGHT | MOSAIC TILES | DESIGNER GLASS DOOR | COMPOSITE MARBLE | | | | GYPSUM PLASTER | WHITE LAPI FINISH |
| | HOME THEATRE | CARPET FINISH | 3" HEIGHT | WOODEN PANEL | VENEER FINISHED FLUSH DOOR WITH MATTE POLISH | COMPOSITE MARBLE | DGU | ALUMINIUM ANODIZED | COMPOSITE MARBLE | GYPSUM PLASTER | WHITE LAPI FINISH |
| | SUITE BEDROOM - 1 | ITALIAN MARBLE | 3" HEIGHT | ITALIAN MARBLE | VENEER FINISHED FLUSH DOOR WITH MATTE POLISH | COMPOSITE MARBLE | DGU | ALUMINIUM ANODIZED | COMPOSITE MARBLE | GYPSUM PLASTER | WHITE LAPI FINISH |
| | SUITE BEDROOM - 2 | ITALIAN MARBLE | 3" HEIGHT | ITALIAN MARBLE | VENEER FINISHED FLUSH DOOR WITH MATTE POLISH | COMPOSITE MARBLE | DGU | ALUMINIUM ANODIZED | COMPOSITE MARBLE | GYPSUM PLASTER | WHITE LAPI FINISH |
| | MASTER BEDROOM-1 | WOODEN PANELS | 3" HEIGHT | WOODEN PANELS | VENEER FINISHED FLUSH DOOR WITH MATTE POLISH | COMPOSITE MARBLE | DGU | ALUMINIUM ANODIZED | COMPOSITE MARBLE | GYPSUM PLASTER | WHITE LAPI FINISH |
| | MASTER BEDROOM-2 | WOODEN PANELS | 3" HEIGHT | WOODEN PANELS | VENEER FINISHED FLUSH DOOR WITH MATTE POLISH | COMPOSITE MARBLE | DGU | ALUMINIUM ANODIZED | COMPOSITE MARBLE | GYPSUM PLASTER | WHITE LAPI FINISH |
| | MASTER BEDROOM-3 | WOODEN PANELS | 3" HEIGHT | WOODEN PANELS | VENEER FINISHED FLUSH DOOR WITH MATTE POLISH | COMPOSITE MARBLE | DGU | ALUMINIUM ANODIZED | COMPOSITE MARBLE | GYPSUM PLASTER | WHITE LAPI FINISH |
| | MASTER BEDROOM-4 | ITALIAN MARBLE | 3" HEIGHT | ITALIAN MARBLE | VENEER FINISHED FLUSH DOOR WITH MATTE POLISH | COMPOSITE MARBLE | DGU | ALUMINIUM ANODIZED | COMPOSITE MARBLE | GYPSUM PLASTER | WHITE LAPI FINISH |
| | S.B.DRESS - 1 | ITALIAN MARBLE | 3" HEIGHT | ITALIAN MARBLE | VENEER FINISHED FLUSH DOOR WITH MATTE POLISH | COMPOSITE MARBLE | | | | GYPSUM PLASTER | WHITE LAPI FINISH |
| | S.B.DRESS - 2 | ITALIAN MARBLE | 3" HEIGHT | ITALIAN MARBLE | VENEER FINISHED FLUSH DOOR WITH MATTE POLISH | COMPOSITE MARBLE | | | | GYPSUM PLASTER | WHITE LAPI FINISH |
| | M.B.DRESS - 1 | WOODEN PANELS | 3" HEIGHT | WOODEN PANELS | VENEER FINISHED FLUSH DOOR WITH MATTE POLISH | COMPOSITE MARBLE | | | | GYPSUM PLASTER | WHITE LAPI FINISH |
| | M.B.DRESS - 2 | WOODEN PANELS | 3" HEIGHT | WOODEN PANELS | VENEER FINISHED FLUSH DOOR WITH MATTE POLISH | COMPOSITE MARBLE | | | | GYPSUM PLASTER | WHITE LAPI FINISH |
| | M.B.DRESS - 4 | ITALIAN MARBLE | 3" HEIGHT | ITALIAN MARBLE | VENEER FINISHED FLUSH DOOR WITH MATTE POLISH | COMPOSITE MARBLE | | | | GYPSUM PLASTER | WHITE LAPI FINISH |
| | S.B.TOILET - 1 | ITALIAN MARBLE | 9'-0" HEIGHT | ITALIAN MARBLE (FUSION WITH HARD MATERIAL) | VENEER FINISHED FLUSH DOOR WITH MATTE POLISH | COMPOSITE MARBLE | GLAZED OPENABLE | ALUMINIUM ANODIZED | COMPOSITE MARBLE | ROUGH PLASTER | ITALIAN MARBLE (FUSION WITH HARD MATERIAL) |
| | S.B.TOILET - 2 | ITALIAN MARBLE | 9'-0" HEIGHT | ITALIAN MARBLE (FUSION WITH HARD MATERIAL) | VENEER FINISHED FLUSH DOOR WITH MATTE POLISH | COMPOSITE MARBLE | GLAZED OPENABLE | ALUMINIUM ANODIZED | COMPOSITE MARBLE | ROUGH PLASTER | ITALIAN MARBLE (FUSION WITH HARD MATERIAL) |
| | M.B.TOILET - 1 | COMPOSITE MARBLE | 9'-0" HEIGHT | COMPOSITE MARBLE (FUSION WITH HARD MATERIAL) | VENEER FINISHED FLUSH DOOR WITH MATTE POLISH | COMPOSITE MARBLE | GLAZED OPENABLE | ALUMINIUM ANODIZED | COMPOSITE MARBLE | ROUGH PLASTER | GRANAMITE (FUSION WITH HARD MATERIAL) |
| | M.B.TOILET - 2 | COMPOSITE MARBLE | 9'-0" HEIGHT | COMPOSITE MARBLE (FUSION WITH HARD MATERIAL) | VENEER FINISHED FLUSH DOOR WITH MATTE POLISH | COMPOSITE MARBLE | GLAZED OPENABLE | ALUMINIUM ANODIZED | COMPOSITE MARBLE | ROUGH PLASTER | COMPOSITE MARBLE (FUSION WITH HARD MATERIAL) |
| | M.B.TOILET - 3 | WOODEN VITRIFIED | 9'-0" HEIGHT | GRANAMITE (FUSION WITH HARD MATERIAL) | VENEER FINISHED FLUSH DOOR WITH MATTE POLISH | COMPOSITE MARBLE | GLAZED OPENABLE | ALUMINIUM ANODIZED | COMPOSITE MARBLE | ROUGH PLASTER | GRANAMITE (FUSION WITH HARD MATERIAL) |
| | M.B.TOILET - 4 | ITALIAN MARBLE | 9'-0" HEIGHT | ITALIAN MARBLE (FUSION WITH HARD MATERIAL) | VENEER FINISHED FLUSH DOOR WITH MATTE POLISH | COMPOSITE MARBLE | GLAZED OPENABLE | ALUMINIUM ANODIZED | COMPOSITE MARBLE | ROUGH PLASTER | GRANAMITE (FUSION WITH HARD MATERIAL) |
| | P.TOILET | GRANAMITE | 9'-0" HEIGHT | GRANAMITE (FUSION WITH HARD MATERIAL) | VENEER FINISHED FLUSH DOOR WITH MATTE POLISH | COMPOSITE MARBLE | GLAZED OPENABLE | ALUMINIUM ANODIZED | COMPOSITE MARBLE | ROUGH PLASTER | GRANAMITE (FUSION WITH HARD MATERIAL) |
| | STORE | GRANAMITE | 9'-0" HEIGHT | GRANAMITE (GRANITE RACK) | VENEER FINISHED FLUSH DOOR WITH MATTE POLISH | COMPOSITE MARBLE | | | | ROUGH PLASTER | GRANAMITE (GRANITE RACK) |
| | WASH | GRANITE | 9'-0" HEIGHT | GRANAMITE | VENEER FINISHED FLUSH DOOR WITH MATTE POLISH | COMPOSITE MARBLE | DGU | ALUMINIUM ANODIZED | COMPOSITE MARBLE | ROUGH PLASTER | GRANAMITE |
| | ATELIAR | GRANAMITE | 3" HEIGHT | GRANAMITE | VENEER FINISHED FLUSH DOOR WITH MATTE POLISH | COMPOSITE MARBLE | DGU | ALUMINIUM ANODIZED | COMPOSITE MARBLE | GYPSUM PLASTER | WHITE LAPI FINISH |
| | SERVANT / DRIVER / COOK ROOM | GRANAMITE | 3" HEIGHT | GRANAMITE | VENEER FINISHED FLUSH DOOR WITH MATTE POLISH | GRANITE | GLAZED SLIDING | ALUMINIUM ANODIZED | GRANITE | GYPSUM PLASTER | WHITE LAPI FINISH |
| | SERVANT RM. TOILET | GRANAMITE | 9'-0" HEIGHT | GRANAMITE | VENEER FINISHED FLUSH DOOR WITH MATTE POLISH | GRANITE | GLAZED OPENABLE | ALUMINIUM ANODIZED | GRANITE | ROUGH PLASTER | GRANAMITE |
| | ATELIER TOILET | VITRIFIED TILES | 9'-0" HEIGHT | VITRIFIED TILES | VENEER FINISHED FLUSH DOOR WITH MATTE POLISH | GRANITE | GLAZED OPENABLE | ALUMINIUM ANODIZED | GRANITE | ROUGH PLASTER | GRANAMITE |

Colaborado Marcas

ELEVATORS

TOSHIBA

MITSUBISHI

The Fastest Elevators in the World
Reduce Environmental Pollution by Eco-Products / Services & Management
Latest Technology for Better, Smooth Ride
Automatic Glass Doors
Fire Alarms
CCTV & Intercom
Full height Mirror
S.S. Finish Cabin for Executive look with LED Lights
Digital display with Touch Buttons & Jerk free Landing
European Design & World Class Engineering

COCK

GROHE

GOLD IDEN

In All the Bathrooms
Word's No.1 fittings Brand
German Design & Engineering
Gives you 10 Year Warranty on all Functional parts
Eco Friendly Design - Saves Water
Smoothest handling

HARDWARE

Hettich

HAFFEL

Largest Manufacturers of Furniture fittings
German Brand
Celebrates its 125th Anniversary (1888-2013)
All the Rooms Doors are Loaded with World's Most Favorite Brand
Corrosion Resistant with High Grade AISI 316 Stainless Steel
Fire Resistance
Tested by World's Largest (bodycote) Testing Group for its - Mechanical and Product Life Cycle Standards
Lead Certified World's Most Favorite

WIRES

Finolex
Cables Limited

RR-KABEL

Finolex Cables is the Market Leader in Electrical Wires
ISO 9001-2008 Certified Company
Shock Proof & Fire Resistance
ISO 14001-2004 Standard Company.

SWITCHES

ANCHOR

HAVELL'S

Japanese Technology
Light Control with Symbols
Led Light for Night Vision
Feather Touch
Shock Proof
Screw Less Terminals for Faster, Simpler and Safer Wiring
Inner Metal Plate for Preventing Warpage
Specially Textured Surface with Matte Finish and Sleek Plate Design

SHOWER PANEL

KOHLER

GOLD IDEN

German Design & Engineering
Gives You 10 Year Warranty on all Functional Parts
Eco Friendly Design - Saves Water
Automatic Control Systems with Air Massagem Water Massage Options in Executive Rooms.

CERAMICS

KOHLER

American Standard

Over 130 Years of Experience
Leading edge Design
Advanced Technologies
Renowned Craftsmanship
All Toilets are Wall Mounted with in Built Jet Spray for Easy Cleaning
Eco Friendly Design Flush which Saves Water
Full Flush & Half Flush Option for Water Saving

AIR CONDITIONERS

MITSUBISHI

DAIKIN

VRV Ducting System
5 Star Rating A/c for Electricity Savings
Technology which Purify the Air for Healthy Breathing
Silent Working for Noise free Environment
World Leading A/c Manufacturing Japanese Company
World Leader in Air Conditioning Systems for Residential, Commercial And Industrial use

WINDOW

DORMA

domal

Trusted Global Partner for Premium Access Solutions & Services
Major Production Plants in Europe, Singapore, Malaysia, China, North & South America
ISO 9001, ISO 14001, DIN/BSEN 16001 & DHSAS 18001 (occupational Health & Safety System)
Reduced outside Noise due to Excellent Insulation Properties
Fitted with Special Monsoon Proof Features to Prevent Heavy Maintenance Free & Eco Friendly

GLASS

SAINT-GOBAIN

ASI

Energy Efficient & Eco Friendly
Known for the Clearest Mirror in the World.
The Eco-friendly Mirrors are Manufactured with Lead-free Paint,
Very Low Volatile Organic Compound (VOC) And Formaldehyde
Environment Friendly Sustainable Products
SGG Mirrors are Clearer, Brighter, Distortion free and more Durable than other Mirrors in its class
Manufactured with State of the Art Technology Innovative Machine for Excellent Fit & Finish Quality
India's Leading and Most Favorite Brand

RAILING

KIEH

STEEL LINE

I-MARK Awarded (India Design Mark)
S.S. Finish Balustrade for the Elegant Looks
Modern Machinery Achieving Highest Quality
Made of Anti Corrosive High Grade 316 Stainless Steel Material

CHIMNEY

KUTCHINA

KAFF

All Kitchens are loaded with Auto clean Technology Chimney
Auto Exhaust (filter) which don't require any extra Exhaust Duct
Digital Display & Bottoms
Suction Capacity of 700 M3 / Hr. with Baffle Filter
Stainless Steel Fit & Finish for the Gorgeous Looks
Life Time Warranty on Parts
Max noise level - 67 Db
High Durability

GENERATOR

sterling
generators

GREAVES POWER

Asia's Largest Integrated Diesel Generator
80 Years of Experience in Project Engineering & Execution
Sustain a Leadership Position through total customer Satisfaction
Full Power backup in Case of Failure of Electricity service
Energy Efficient and Eco-Friendly Generator which Saves max fuel

HAND DRYER

Club common toilets are Loaded with Automatic sense Hand Dryer

Surface Mounted with White Powder Coated
Dries Hand Completely in 10- 15 Seconds
95% Cost Savings Vs Paper towel
Uses 80% Less Energy
Lead Certified Design

Note :- Brands may be substituted by Equivalent Brands in case of non-availability of Products or any other reasons.

Características

Precinct Conveniences :-

- Golf Car (Electric Car) Service For Pedestrians & Visitors
- Solar Street Light
- Departmental Store (Grocery / Vegetable / Dairy Product)
- Valet Laundry (Dry Cleaning) / Press Facility
- Key Card Security Access
- Handicap Accessibility
- Drop-Off Plaza
- Car Wash Station
- Wi-fi
- 11' Floor Height (Slab Top to Slab Top)
- Demarcated Common Facility For Safety
- Maximum Day Light & View
- All Side Ventilated Structure
- Vastu Compliant
- Green Education For Staff
- Address Guide Map Board
- Waiting Lounge For Visitor's Driver
- Single Entry - Exit in Premises for Vigilant Security

Reception Foyer

- Triple Height Waiting Lounge
- Canopy
- First Impression of Lavishness & Luxury
- Italian Marble Flooring With Lighting
- Mitsubishi A.C.
- Auto Sensor Auto Entrance Glass Door
- Intercom & Video Door Phone
- Electronic Digital Name Plate
- CCTV
- LCD

Basic Campus Need

- Society Conference Office
- Driver Seating In Each Apartment
- Security Room In Each Apartment
- Common Staff Room For Society Maintenance

Toilets

- All Floor Trap with S.S. Finishes
- No Sunk in Toilets
- Modular False Ceiling in All Toilets for Easy Maintenance

Designed hard scape and Landscape area is located in such a way that all Flats open up and merge in Green Zone which make whole Campus very Live & Environment Friendly. Even different Refreshment Activities are incorporated in Landscape area.

Fire Safety (As Per GDCR Norms)

- Fire Hydrant System
- Fire Safety Equipment
- Water Sprinkler System

IBMS For Club House & Reception

- One Touch Control of Curtains & Lights System
- Fully Automatic
- Power Saving - Auto On/Off. Sensor - if Person is not in that Particular Area

Air-Conditioner System

- VRV (Mitsubishi/ Daikin/ Equivalent Brand) Outdoor Unit Only with Entry - Level Copper Piping in Each Flat will be Provided - 28 HP in Universal Type, 24 HP in Galaxy Type, 22 HP in Star Type

Elevation

- Innovative Unique Design

Generator

- Full Power Backup in Flat Plus Common Utilities as per NBC Norms

Parking - Garage Car Park

- 6 Car Parking For Universal Type Including 2 Garage Parking
- 5 Car Parking For Galaxy Type Including 1 Garage Parking
- 5 Car Parking For Star Type Including 1 Garage Parking
- 7 Car Parking in Pent House For Universal Type Including 3 Garage Parking
- 6 Car Parking in Pent House For Galaxy Type Including 2 Garage Parking
- 6 Car Parking in Pent House For Star Type Including 2 Garage Parking
- 40 Visitor's Car Parking
- Car Garage Provided to Each Flat Holder with Shutter & Remote Control Access, So that the Expensive Car Can be Kept in the Locked Room Space.
(2 - Car in Universal Type & 1 - Car in Galaxy/Star Type)
- Tri-mix Concrete Road
- Shaded Car Parking With A Provision Of Poly Carbonate Sheet At Ground Level

Construction Linked Payment Plan

| | |
|--|-------|
| Time of Booking | : 5% |
| 1st Month | : 15% |
| Digging Start | : 5% |
| Raft Floor Slab | : 5% |
| Ground Floor Slab | : 5% |
| 1st floor Slab | : 5% |
| 2nd, 3rd, 4th floor Slab | : 5% |
| 5th, 6th, 7th floor Slab | : 5% |
| 8th, 9th, 10th floor Slab | : 5% |
| 11th, 12th floor Slab | : 5% |
| Masonry Completed | : 10% |
| Plaster Completed | : 10% |
| Flooring Completed | : 10% |
| Plumbing / Electric / Colour Completed | : 5% |
| Documentation / Possession Time | : 5% |

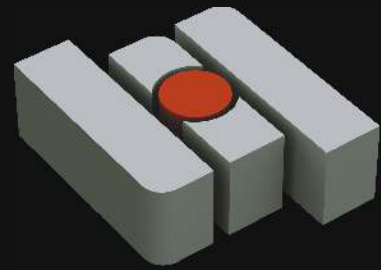
OR

Regular Payment Time

| | |
|--|-------------|
| Time of Booking | : 5% |
| 30 Day | : 15% |
| Monthly Installment (Total 36 Months) | : 2.5% x 32 |

Please Remember

- Outlook of the Scheme is Strictly NOT PERMITTED during & after the completion of the Project. Internal Changes will be done with Prior Permission & will be Charged extra.
- Legal Document & File Charges, Service Tax / GST, Vat, All GEB Expenses, Safety Grill, Gas Line, Society Formation, Advance Society Maintenance Charges will be beared by purchaser.
- Continuous default's Payments leads to Cancellation of Deal.
- Super built up area 42%.
- If Any Changes in Rules & Regulation of any Government Authority it's bounded to all Members.



There are many who build houses.
Only a few build homes.

Project By



ISO 9001 : 2015
ISO 14001 : 2015
ISO 45001 : 2018

www.happyhomegroup.co.in
HAPPY 2 HELP (24x7) @ 7878 808080



Corporate Office :
"SHANTINIKETAN" 1st Floor,
Nr. S. D. Jain School, University - Airport Road,
Vesu Cross Road, Surat - 7.

www.gujera.gujarat.gov.in | RERA REG. : PR/GJ/SURAT/SURAT CITY/SUDA/RAA00208/210917

TEAM

 ARCHITECTS' ARTISTRY
e-Mail : ar.artistry@gmail.com

SURESH B. MODIYA
B.E. (CIVIL)
CONSULTING ENGINEER
e-mail : suresh_modiyya@yahoo.in

 SANJAY PURI
ARCHITECTS
MUMBAI
e-mail : sanjaypuriarchitect@gmail.com

 TECHNOCRAT CONSULTANT
CIVIL & STRUCTURAL ENGINEERS
e-mail : technocrat_surat@rediffmail.com

MAL WAWALA ENGINEERING
SERVICES PVT. LTD.
e-mail : office.mespl@gmail.com

Catalogue Design & Printed by



www.amrutindia.com

Stereo 3D & Animation



www.eyecodesign.in

Post Production



www.avmpictures.com



University - Airport Road, B/H - Lalbhai Stadium,
Near Rahulraj Mall, Vesu, Surat.